

PART LIST	QTY
01. FEMALE CONTACT ASSEMBLY	3
02. MALE CONTACT ASSEMBLY	3
03. INSULATORS (NSS)	6
04. COUPLER PIPE (25MM NB, 3M)	2
05. LINK PIPE (20MM NB)	3
06. BEARING ASSEMBLY	6
07. BASE CHANNEL 75X40 MM (PAIRED)	3
08. OPERATOR DOWN PIPE (40MM NB, 1.5M)	1
09. OPERATING MECH BOX (MANUAL)	1

- NOTES**
1. ALL DIMENSIONS ARE IN MM
 2. ALL FERRULUS PARTS ARE HOT DIP GALVANISED
 3. ALL COPPER PARTS ARE SILVER PLATED AT CONTACT POINTS ONLY
 4. ALL G.I. PIPES ARE OF B CLASS
 5. STRUCTURE MOUNTING BOLTS ARE NOT IN SCOPE OF SUPPLY
 6. TOLERANCE - +/- 5%

- REFERENCED DRAWING NOS.**
1. MALE & FEMALE CONTACT DRAWING - REW/244 B SH. NO. 2
 2. TERMINAL CONNECTOR - REW/244 SH. NO. 3
 3. OPERATING MECH BOX - REW/244 (MANUAL) I.H. NO. 4 & 5

Electricity Sub Station Design Circle II
 UPP TCL, 1st Floor, Shakti Bhawan Lko.
DRAWING APPROVED

IG NO REW/244 BI

REV

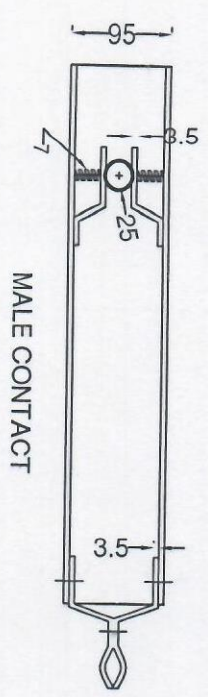
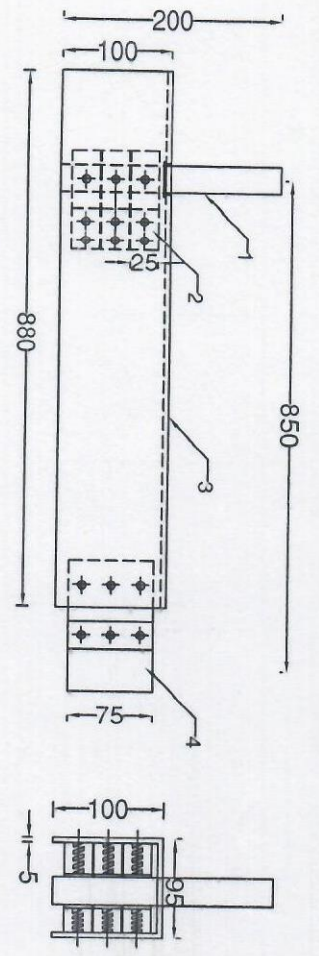
DATE 23.01.19

SIGN

AE

EE

SE

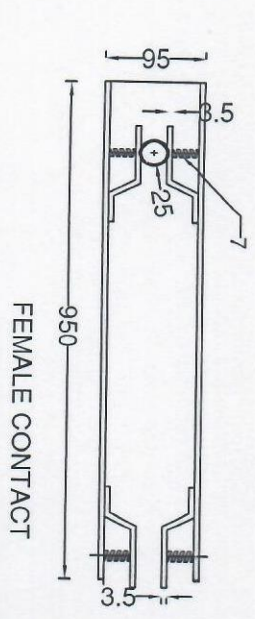
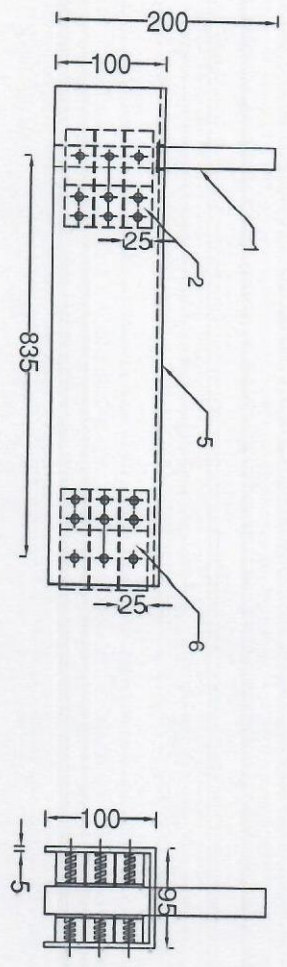


PART LIST

- 01. TERMINAL STUD (25MM OD, HDE COPPER ROD)
- 02. TERMINAL JAWS (25X3.5MM, 3 PAIR FINGERS, HDE CU WITH SILVER PLTING)
- 03. MALE CONTACT ARM (100X95X5 MM, AL U SECT.)
- 04. MALE CONTACT (75X3.5 MM, 1 PAIR FINGER, HDE CU FLAT)
- 05. FEMALE CONTACT ARM (100X95X5 MM, AL U SECT.)
- 06. FEMALE CONTACT JWS (25 X 3.5 MM, 3 PAIR FINGERS, HDE CU WITH SILVER PLATING)
- 07. SPRING (STAINLESSSTEEL, WITH TAFLOIN INSERTS)

NOTES

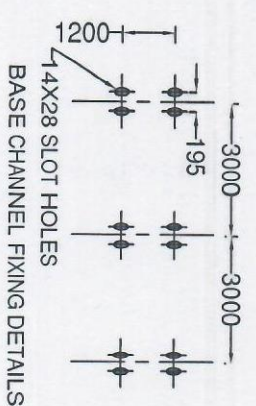
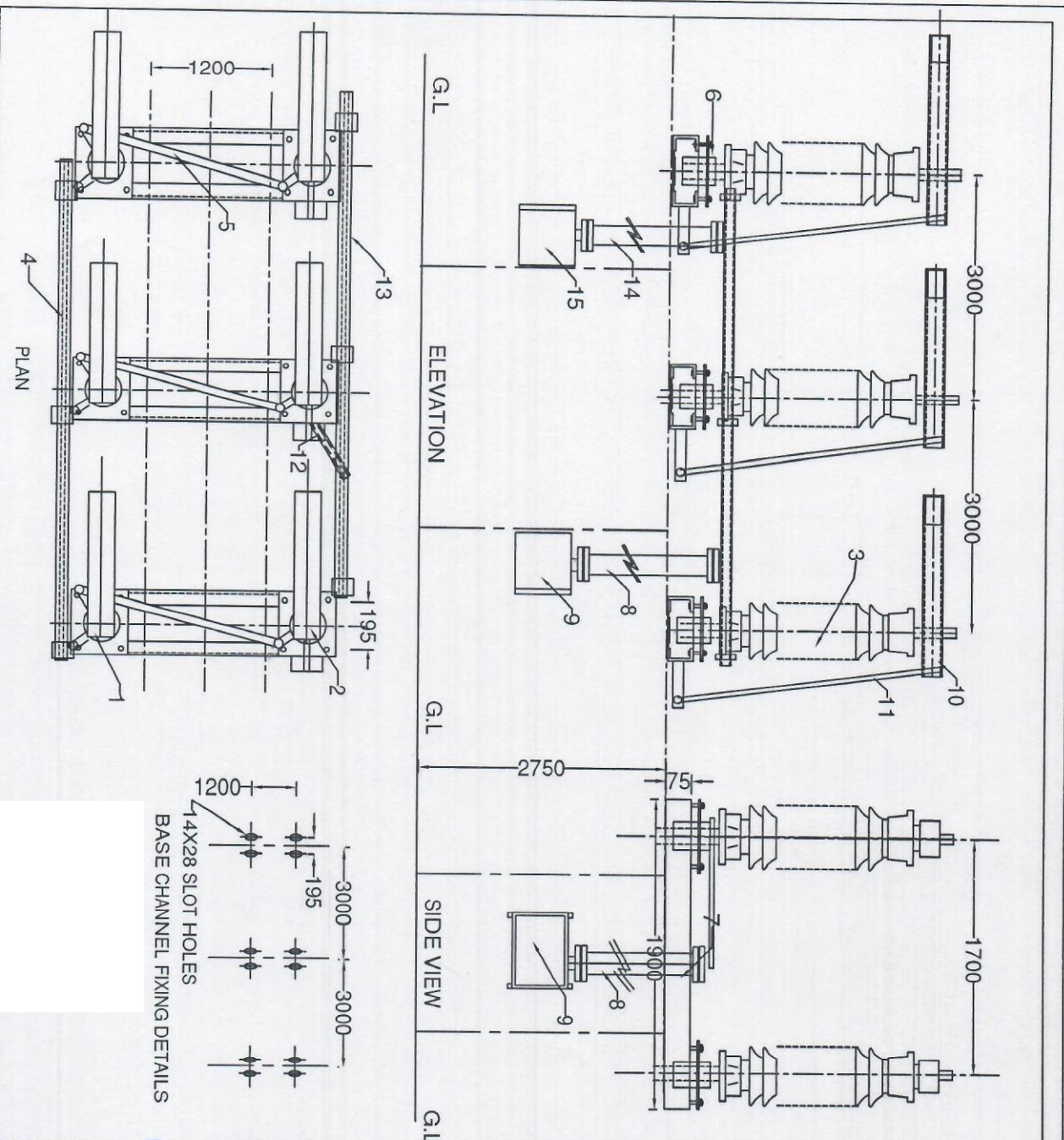
- 1. ALL DIMENSIONS ARE IN MM
- 2. ALL FERROUS PARTS ARE HOT DIP GALVANIZED
- 3. ALL HDE COPPER CONTACT POINTS ARE ELECTROPLATED
- 4. TOLERANCE : +/- 5%



Electricity Sub Station Design Circle
 UPTCL, 13th Floor, Shakti Bhawan Lko.

DRAWING APPROVED

AE
 E
 SE



PART LIST	QTY
01. FEMALE CONTACT ASSEMBLY	3
02. MALE CONTACT ASSEMBLY	3
03. INSULATORS(NSS)	6
04. COUPLER PIPE (25MM NB, 3M)	2
05. LINK PIPE (20MM NB)	3
06. BEARING ASSEMBLY	6
07. BASE CHANNEL 75X40 (PAIRED)	3
08. OPERATOR PIPE 40MM NB, 1.5M	1
09. OPERATING MECH BOX (MANUAL)	1
10. E/S FEMALE CONTACT	3
11. E/S MALE CONTACT	3
12. E/S AUX. LINK PIPE (25MM NB)	1
13. E/S COUPLER PIPE (25MM NB, 3M)	2
14. E/S OPER. DOWN PIPE (40MM NB, 1.5M)	1
15. E/S OPER. MECH BOX (MANUAL)	1

NOTES

1. ALL DIMENSIONS ARE IN MM
2. ALL FERRIUS PARTS ARE HOT DIP GALVANISED
3. ALL COPPER PARTS ARE SILVER PLATED AT CONTACT POINTS ONLY
4. ALL G.I. PIPES ARE OF B CLASS
5. STRUCTURE MOUNTING BOLTS ARE NOT IN SCOPE OF SUPPLY
6. TOLERANCE - +/- 5%

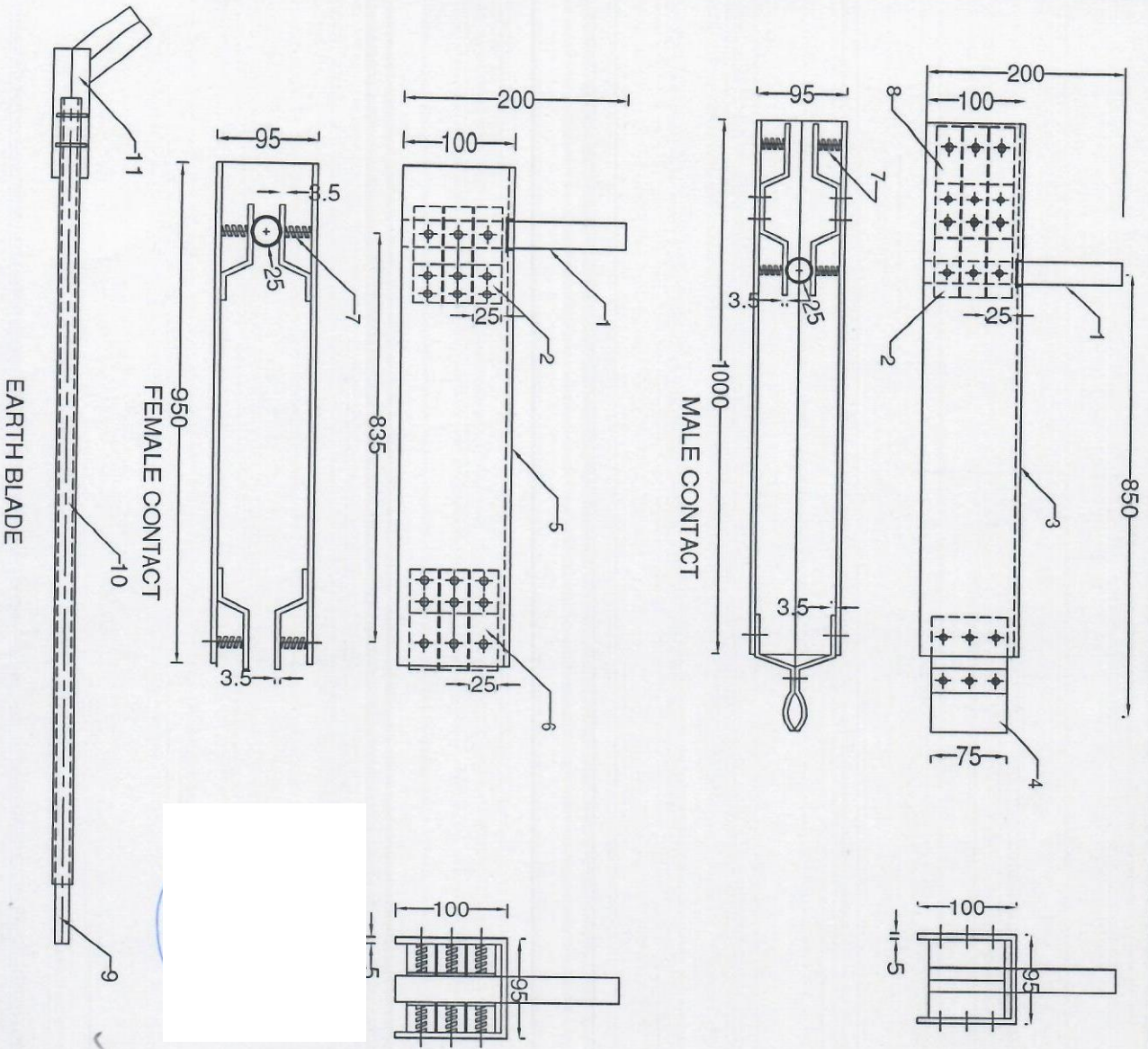
REFERENCE DRAWING NOS.

1. MALE & FEMALE CONTACT DRAWING - REW/244 L.I.H. NO. 2
2. TERMINAL CONNECTOR - REW/244 SH. NO. 3
3. OPERATING MECH BOX - REW/244 (MANUAL) SH. NO. 4 & 5

Electricity Sub Station Design Circle
 JIPPTCL, 13th floor, Shakti Bhawan Lko.

DRAWING APPROVED

AE
 EE
 SE



PART LIST

01. TERMINAL STUD (25MM OD, HDE COPPER ROD)
02. TERMINAL JAWS (25X3.5MM, 3 PAIR FINGERS, HDE CU WITH SILVER PLATING)
03. MALE CONTACT ARM (100X95X5 MM, AL U SECT.)
04. MALE CONTACT (75X3.5 MM, 1 PAIR FINGER, HDE CU WITH SILVER PLATING)
05. FEMALE CONTACT ARM (100X95X5 MM, AL U SECT.)
06. FEMALE CONTACT JWS (25 X 3.5 MM, 3 PAIR FINGERS, HDE CU WITH SILVER PLATING)
07. SPRING (STAINLESSSTEEL, WITH TAFILON INSERTS)
08. EARTH SWITCH JAW (25X3.5 MM, 3 PAIR FINGERS, HDE CU WITH SILVER PLATING)
09. E/S MC TIP 25MM ODCU PIPE
10. E/S MC ARM (38 MM ID, 32 MM ID, AL TUBE)
11. **E/S MC MECHANISMS) Cu Flexible - 30 X 5mm - 01 No.**

NOTES

1. ALL DIMENSIONS ARE IN MM
2. ALL FERROUS PARTS, RE HOT DIP GALVANIZED
3. ALL HDE COPPER CONTACT POINTS ARE ELECTROPLATED
4. TOLERANCE : +/- 5%

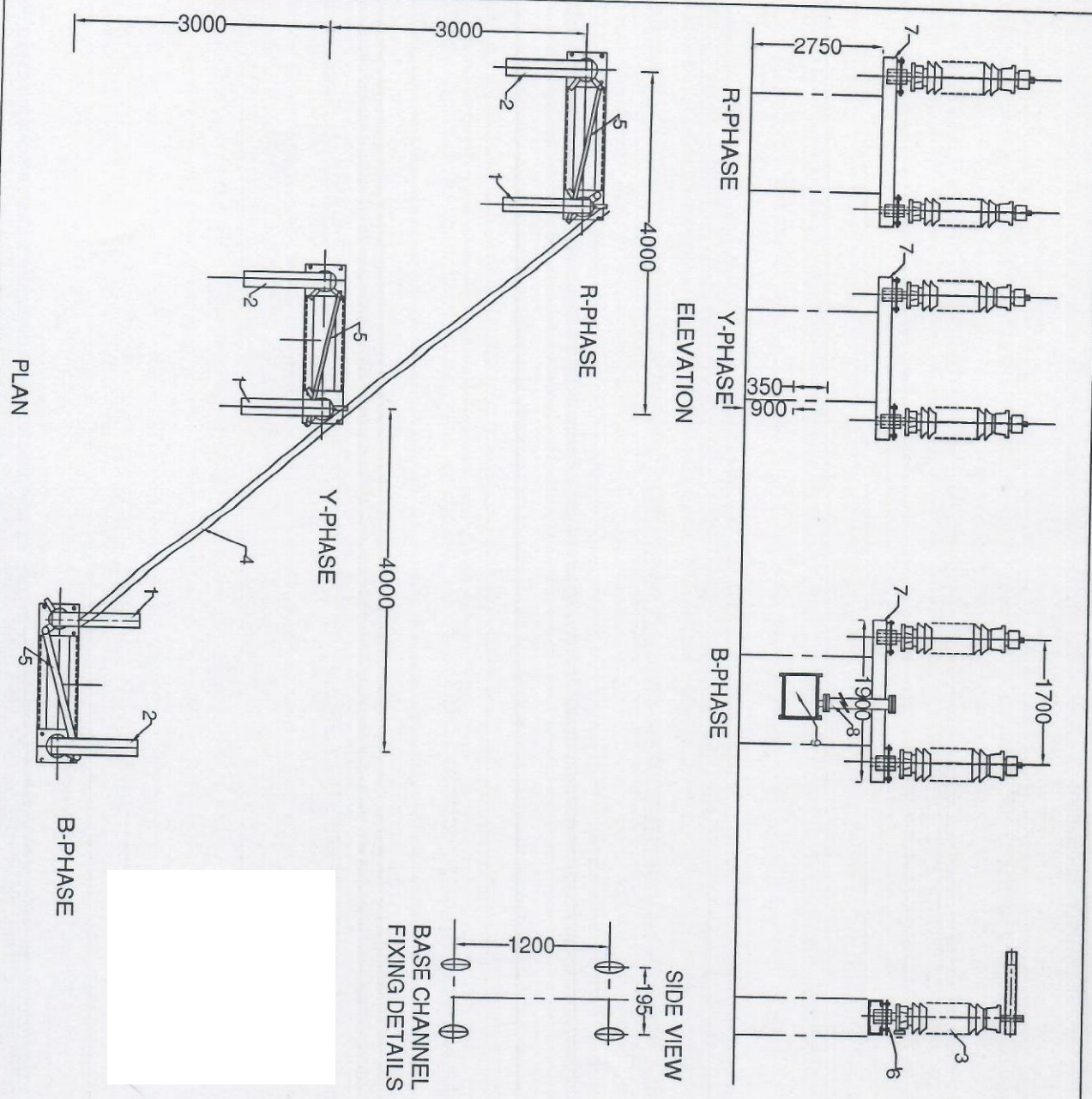
Electricity Sub Station Design Circle II
UPPTCL, 13th Floor, Sakti Bhawan Lko.

DRAWING APPROVED

AE

EE

SSE



PART LIST	QTY
01. FEMALE CONTACT ASSEMBLY	3
02. MALE CONTACT ASSEMBLY	3
03. INSULATORS (NSS)	6
04. COUPLA PIPE (25MM NB)	2
05. LINK PIP (20 MM NB)	3
06. BEARING ASSEMBLY	6
07. BASE CHANNEL 75X40 (PAIRED)	3
08. OPERT DWN PIPE (40MM NB, 1.5 M)	3
09. OPERATING MECH BOX (MANUAL)	1

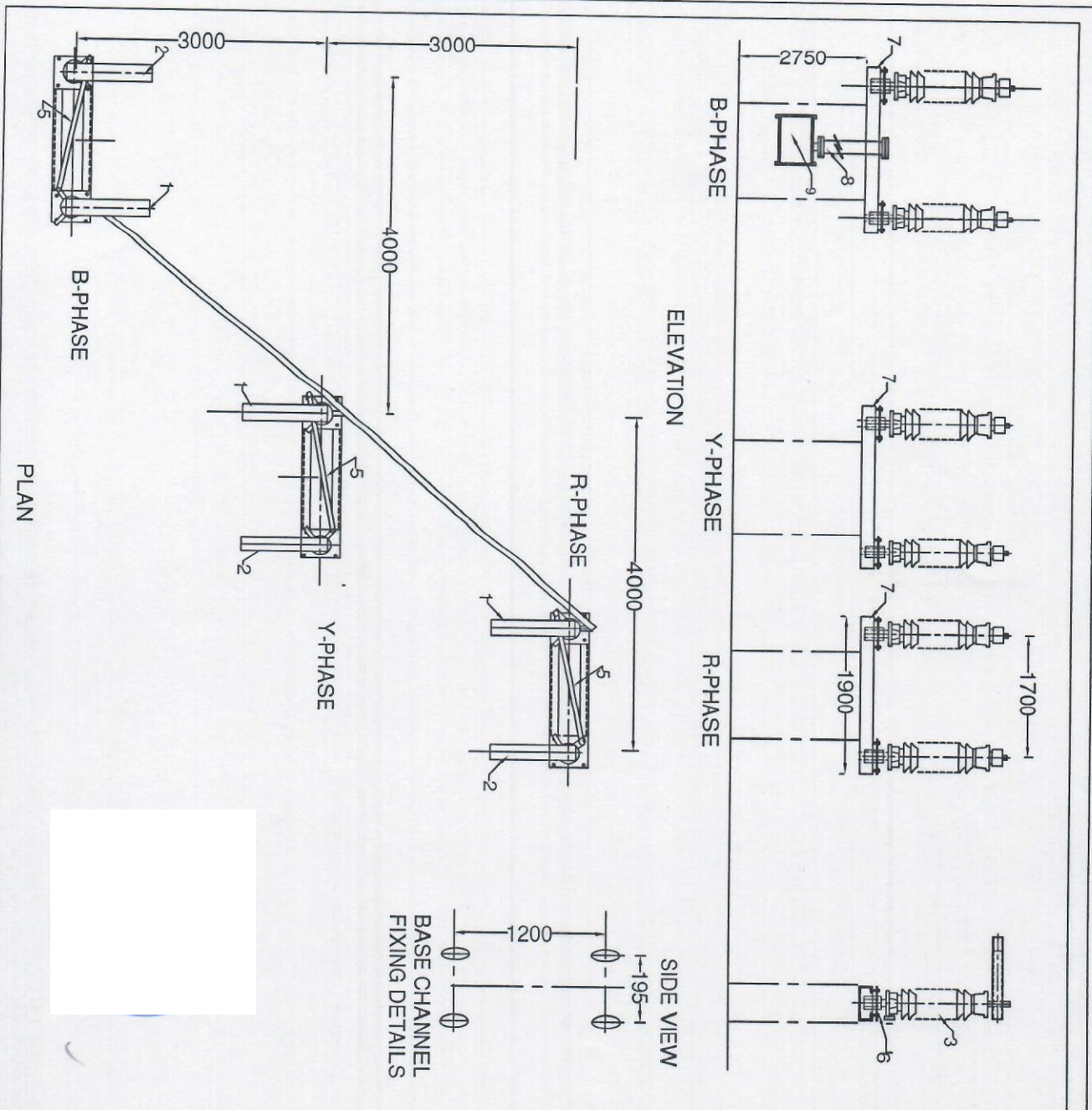
NOTES

1. ALL DIMENSIONS ARE IN MM
2. ALL FERRULS PARTS ARE HOT DIP GALVANISED
3. ALL COPPER PARTS ARE SILVER PLATED AT CONTACT POINTS ONLY
4. ALL GI PIPES ARE OF B CLASS
5. STRUCTURE MOUNTING BOLTS ARE NOT IN SCOPE OF SUPPLY
6. TOLERANCE - +/- 5%

REFERENCE DRAWING NOS.

1. MALE & FEMALE CONTACT DRAWING - REW/244 BSH, NO. 2
2. TERMINAL CONNECTOR - REW/244 SH, NO. 3
3. OPERATING MECH BOX - REW/244 (MANUAL) SH, NO. 4 & 5

Electricity SubStation Design Circle
 UPP TCL, 13th Floor, Shakti Bhawan Lko.
DRAWING APPROVED
 AE
 EE
 SE



PART LIST	QTY
01. FEMALE CONTACT ASSEMBLY	3
02. MALE CONTACT ASSEMBLY	3
03. INSULATORS (NSS)	6
04. COUPLER PIPE (25MM NB)	2
05. LINK PIPE (20MM NB)	3
06. BEARING ASSEMBLY	6
07. BASE CHANNEL 75X40 (PAIRED)	3
08. OPERATOR PIPE (40MM NB, 1.5 M)	1
09. OPERATING MECH BOX (MANUAL)	1

NOTES

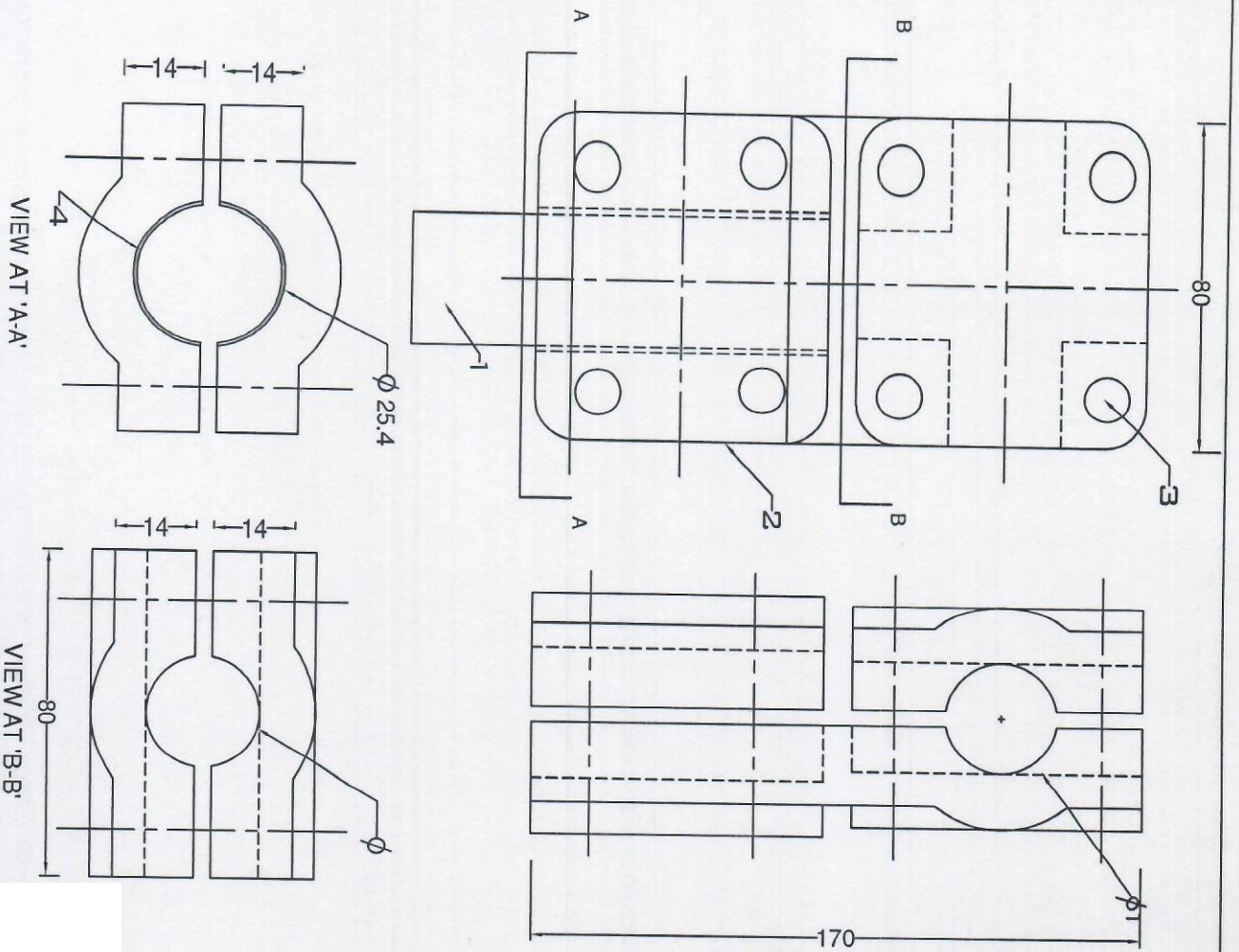
1. ALL DIMENSIONS ARE IN MM
2. ALL FERRUS PARTS ARE HOT DIP GALVANISED
3. ALL COPPER PARTS ARE SILVER PLATED AT CONTACT POINTS ONLY
4. ALL G.I PIPES ARE OF B CLASS
5. STRUCTURE MOUNTING BOLTS ARE NOT IN SCOPE OF SUPPLY
6. TOLERANCE - +/- 5%

REFERENCE DRAWING NOS.

1. MALE & FEMALE CONTACT DRAWING - REW/244 BISH. NO. 2
2. TERMINAL CONNECTOR - REW/244 SH. NO.3
3. OPERATING MECH BOX - REW/244 (MANUAL) SL. NO.4 & 5

Electricity Sub Station Design Circle II
 UPP TCL, 13th Floor, Shakti Bhawan Lko.
DRAWING APPROVED

AE 
 EE 
 SE 



PART LIST

- 01. TERMINAL STUD (25 MM OD, COPPER ROD)
- 02. CONNECTOR BODY - AL. ALLOY
- 03. NUTS AND BOLTS - NS ELECTROPLATED
- 04. BI-METALLIC STRIP -AL. - CU

NOTES

- 1. ALL DIMENSIONS ARE IN MM
- 2. CONNECTORS AS PER IS: 5561 - 1992
- 3. TOLERANCE : +/- 5%
- 4. Ø FOR PANTHER = 21.1 MM
- 5. Ø FOR ZEBRA = 28.62 MM

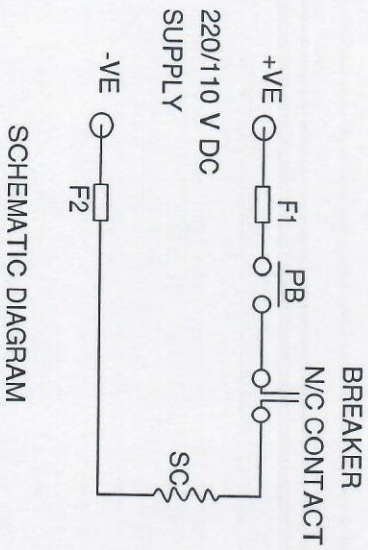
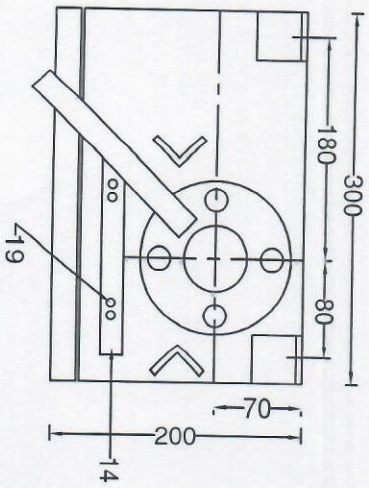
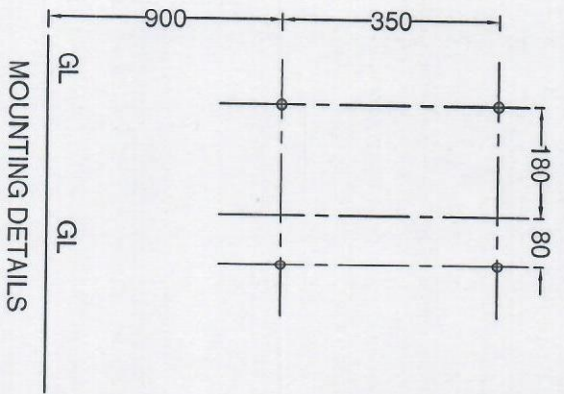
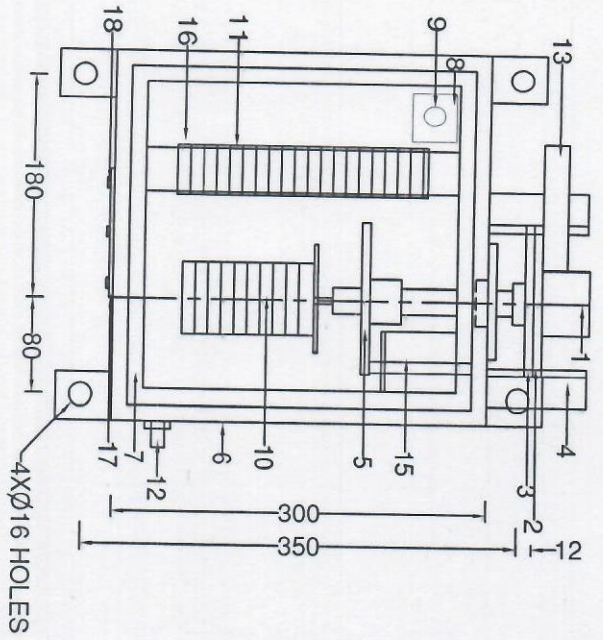
Electricity Sb Station Design Circle II
 UPPTCL, 13th Floor, Shakti Bhawan Lko.

DRAWING APPROVED

AE

FF

SSE



PART LIST

01. DOWN PIPE
02. FLANGE (DOWNPIPE)
03. FLANGE (BOX)
04. ON & OFF STOPPER
05. ELECTRICAL LOCKING DISC
06. CUBICLE (14 SWG MS SHEET)
07. RUBBER LINER ON DOOR
08. RAIN SHADE FOR PUSH BUTTON
09. PUSH BUTTON
10. AUX. SWITCH (6 NO + 6 NC)
11. TERMINAL BLOCK
12. EARTHING TERMINAL
13. OPERATING LEVER
14. PADLOCK PLATE FOR HANDLE
15. SOLENOID
16. FUSES
17. CABLE GLAND PLATE
18. CABLE GLAND
19. HOLE FOR PAD LOCK

NOTES

1. ALL DIMENSIONS ARE IN MM
2. ALL FERROUS PARTS ARE HOT DIP GALVANIZED
3. CUBICLE WILL BE PAINTED TO SHADE NO. 631 OF IS:5
4. INTERNAL WIRING WILL BE DONE WITH 2.5 SQ. MM CU STRANDED CONDUCTOR & 20% SPARE TERMINALS WILL BE PROVIDED.
4. TOLERANCE : +/- 5%

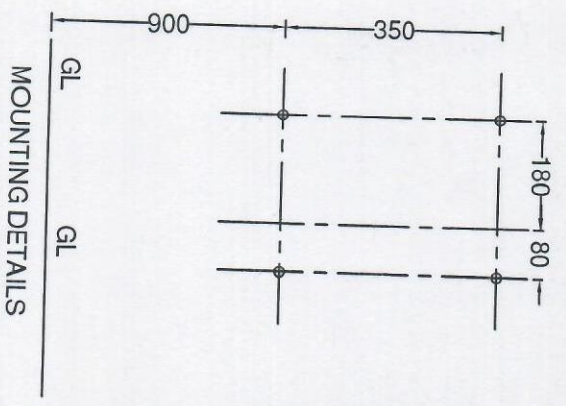
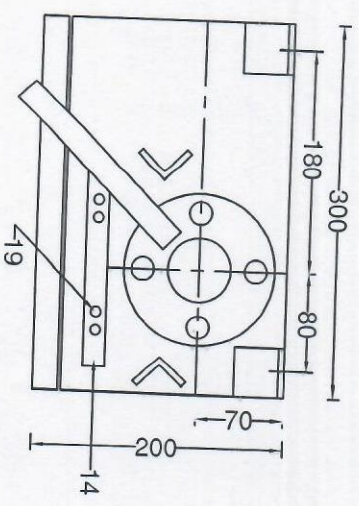
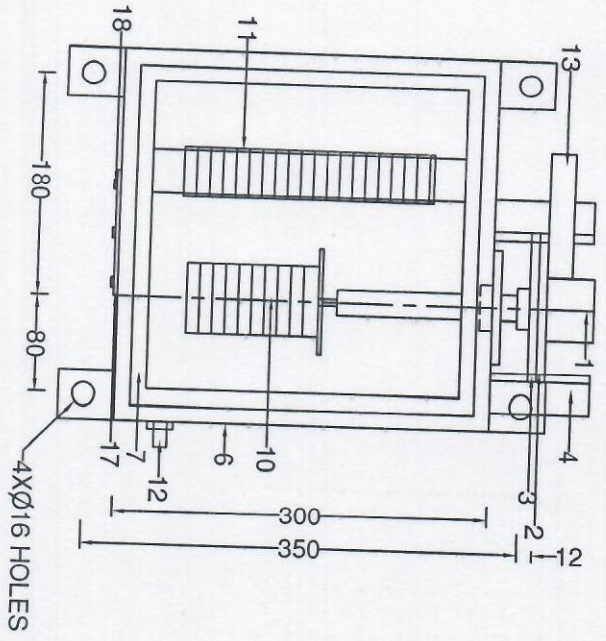
Electricity Sub Station Design Circle II
 UPP TCL, 13th Floor, Shakti Bhawan Lko.

DRAWING APPROVED

AE

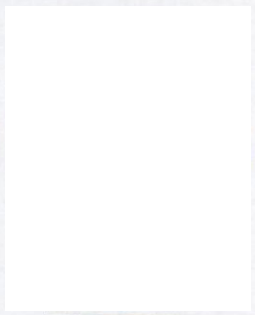
SE

SE





- PART LIST**
- 01. DOWN PIPE
 - 02. FLANGE (DOWNPIPE)
 - 03. FLANGE (BOX)
 - 04. ON & OFF STOPPER
 - 05.
 - 06. CUBICLE (14 SWG M.S SHEET)
 - 07. RUBBER LINER ON DOOR
 - 08.
 - 09.
 - 10. AUX. SWITCH (6 NO + 6 NC)
 - 11. TERMINAL BLOCK
 - 12. EARTHING TERMINAL
 - 13. OPERATING LEVER
 - 14. PADLOCK PLATE FOR HANDLE
 - 15.
 - 16.
 - 17. CABLE GLAND PLATE
 - 18. CABLE GLAND
 - 19. HOLES FOR PAD LOCK

- NOTES**
1. ALL DIMENSIONS ARE IN MM
 2. ALL FERROUS PARTS ARE HOT DIP GALVANIZED
 3. CUBICLE WILL BE PAINTED TO SHADE NO. 631 OF IS:5
 4. INTERNAL WIRING WILL BE DONE WITH 2.5 SQ. MM CU STRANDED CONDUCTOR & 20% SPARE TERMINALS WILL BE PROVIDED.
 4. TOLERANCE : +/- 5%



Electricity Sub Station Design Circle II
 UPP/PTCL, 13th Floor, Shakti Bhawan Lko.
DRAWING APPROVED

AE 
 PE 
 SE 