

PART LIST	QTY
01. FEMALE CONTACT ASSEMBLY	3
02. MALE CONTACT ASSEMBLY	3
03. INSULATOR (NSS)	6
04. COUPLER PIPE (25MM NB, 3M)	2
05. LINK PIPE (20MM NB)	3
06. BEARING ASSEMBLY	6
07. BASE CHANNEL 75X40 MM (PAIRED)	3
08. OPERATOR PIPE (40MM NB, 1.5M)	1
09. OPERATING MECH BOX (MOTORIZED)	1

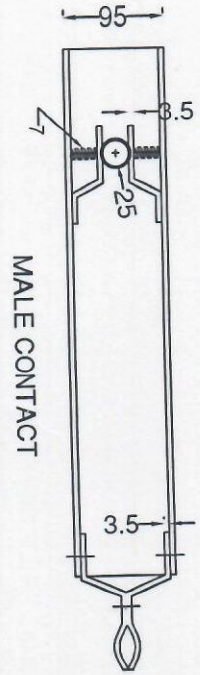
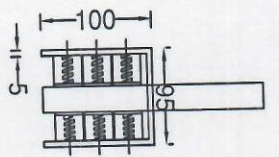
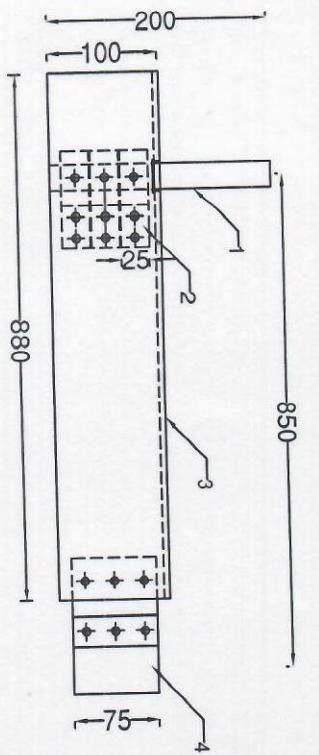
NOTES

1. ALL DIMENSIONS ARE IN MM
2. ALL FERROUS PARTS ARE HOT DIP GALVANISED
3. ALL COPPER PARTS ARE SILVER PLATED AT CONTACT POINTS ONLY
4. ALL G.I. PIPES ARE OF B CLASS
5. STRUCTURE MOUNTING BOLTS ARE NOT IN SCOPE OF SUPPLY
6. TOLERANCE: - +/-.5%

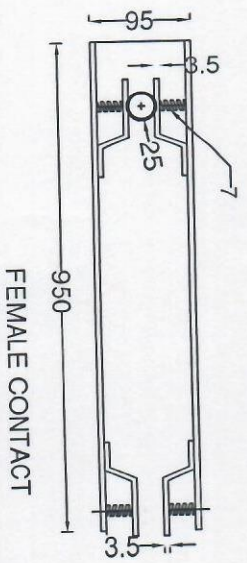
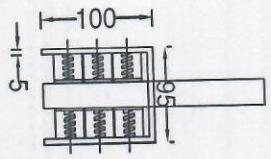
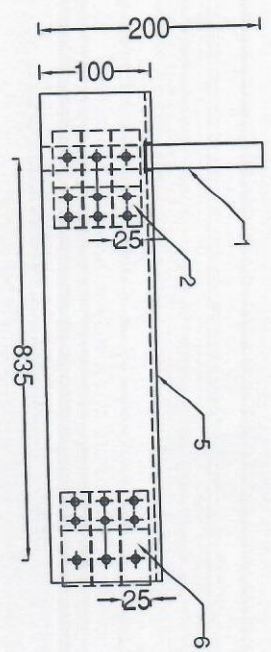
REFERENCE DRAWING NOS.

1. MALE & FEMALE CONTACT DRAWING - REW/244 BSH. NO. 2
2. TERMINAL (CONNECTOR - REW/244 SH. NO. 3
3. OPERATING MECH BOX - REW/244 (MOT) SH. NO. 4 & 5

Electricity Sub Station Design Circle II
 UPPTC, 13th Floor, Shakti Bhawan Lko.
DRAWING APPROVED
 AE
 EE
 S.E.



MALE CONTACT



FEMALE CONTACT

PART LIST

01. TERMINAL STUD (25 MM OD, COPPER ROD)
02. TERMINAL JAWS (25X3.5MM, 3 PAIR FINGERS, HDE CU SILVER PLATED)
03. MALE CONTACT ARM (100X95X5 MM, AL U SECT.)
04. MALE CONTACT (75X3.5 MM, 1 PAIR FINGER, HDE CU FLAT)
05. FEMALE CONTACT ARM (100X95X5 MM, AL U SECT.)
06. FEMALE CONTACT JAWS (25 X 3.5 MM, 3 PAIR FINGERS, HDE CU SILVER PLATED)
07. SPRING (STAINLESS STEEL, WITH TAFILON INSERTS)

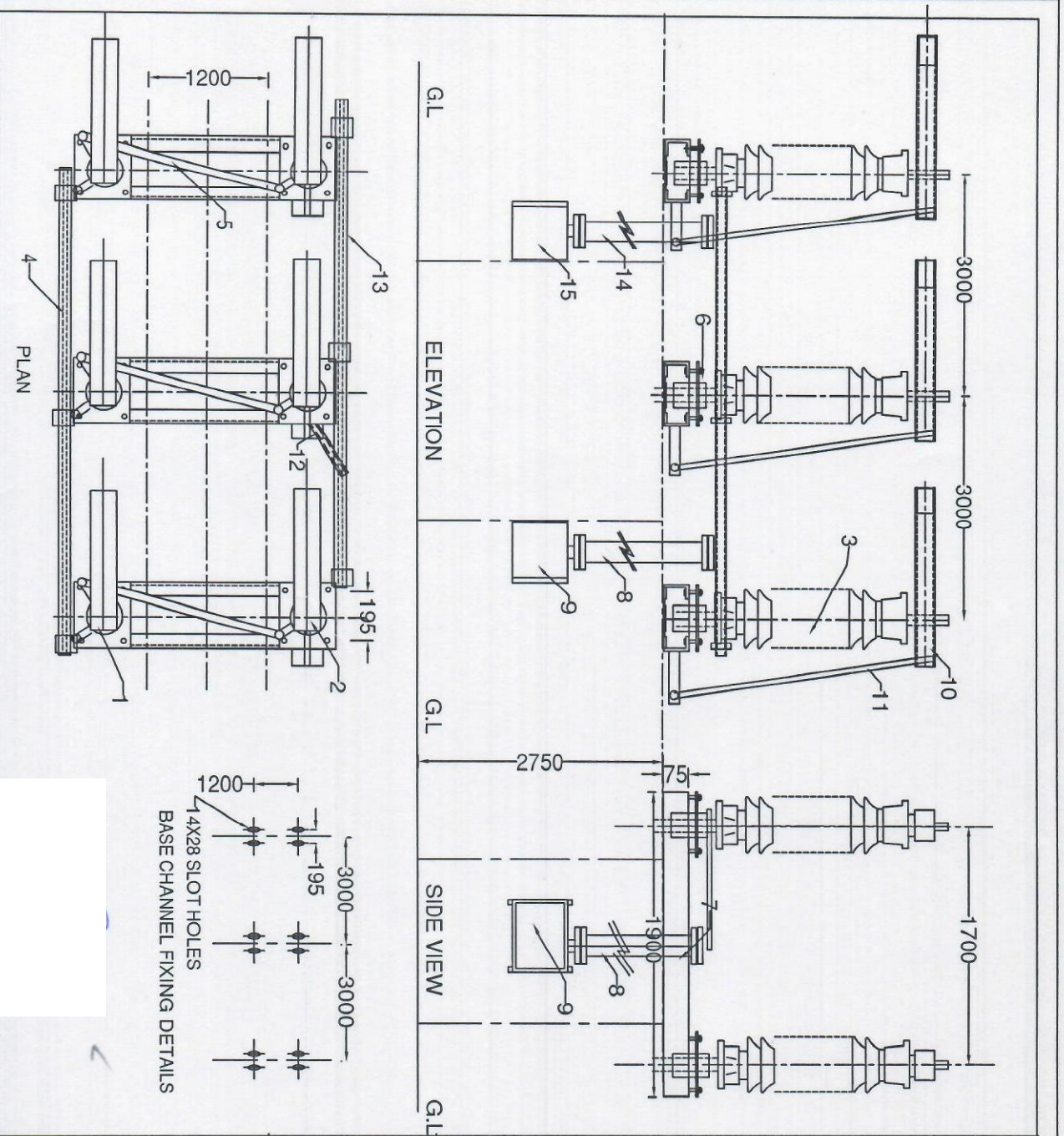
NOTES

1. ALL DIMENSIONS ARE IN MM
2. ALL FERROUS PARTS ARE HOT DIP GALVANIZED
3. ALL HDE COPPER CONTACT POINTS ARE ELECTROPLATED
4. TOLERANCE : +/- 5%

Electricity Sub Station Design Crdce II
 UPP TCL, 13th Floor, Shakti Bhawan Lko.

DRAWING APPROVED

AE
 EE
 SE

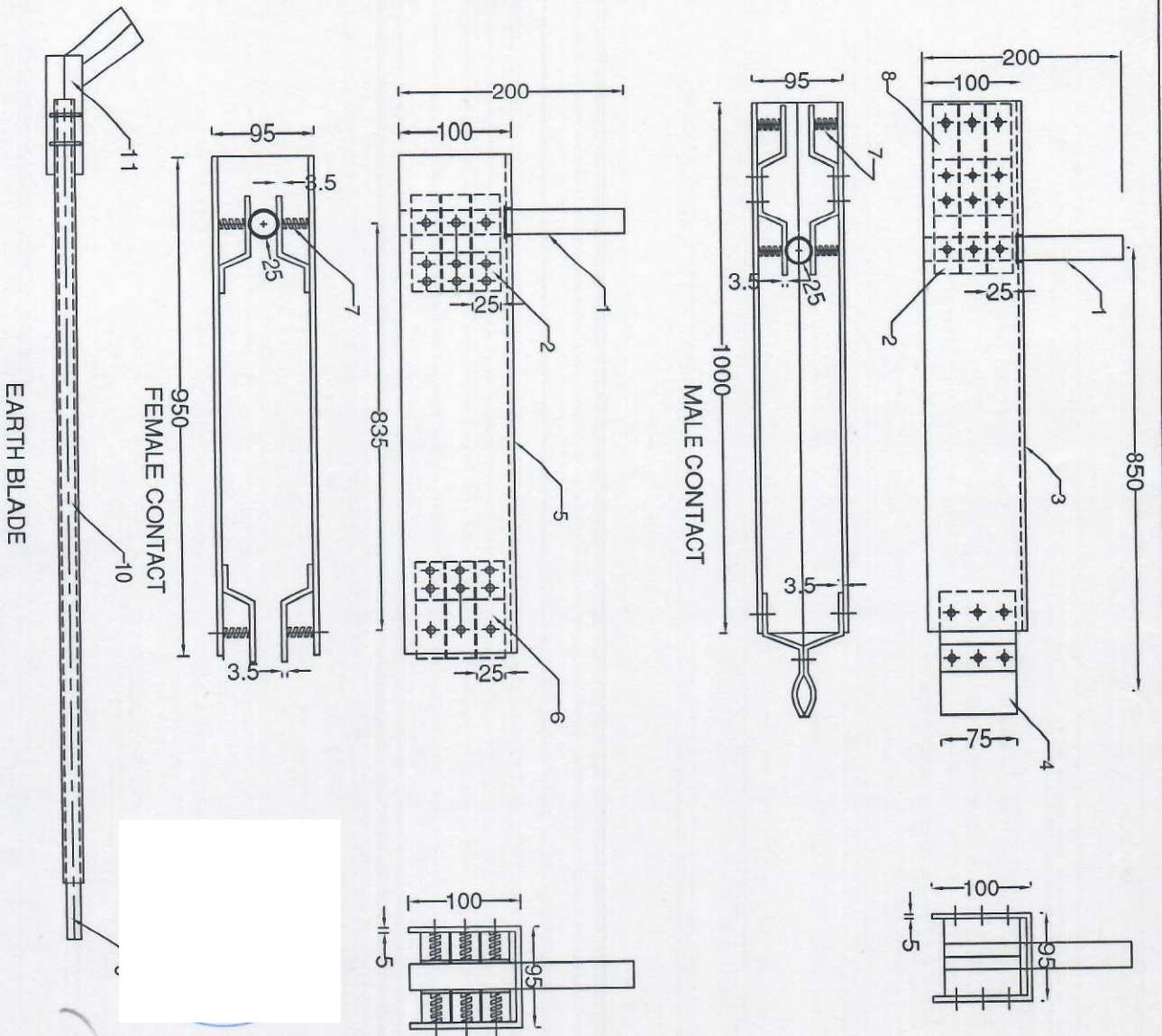


PART LIST	QTY
01. FEMALE CONTACT ASSEMBLY	3
02. MALE CONTACT ASSEMBLY	3
03. INSULATOR(S)(NSS)	6
04. COUPLAR PIPE (25MM NB, 3M)	2
05. LINK PIPE (20MM NB)	3
06. BEARING ASSEMBLY	6
07. BASE CHANNEL 75X40 (PAIRED)	3
08. OPER DOWN PIPE 40MM NB, 1.5M	1
09. OPERATING MECH BOX (MOTORIZED)	1
10. E/S FEMALE CONTACT	3
11. E/S MALE CONTACT	3
12. E/S AUX LINK PIPE (25MM NB)	1
13. E/S COUPLAR PIPE (25MM NB, 3M)	2
14. E/S OPER DOWN PIPE (40MM NB, 1.5M)	1
15. E/S OPER MECH BOX (MOTORIZED)	1

NOTES
 1. ALL DIMENSIONS ARE IN MM
 2. ALL FERROUS PARTS ARE HOT DIP GALVANISED
 3. ALL COPPER PARTS ARE SILVER PLATED AT CONTACT POINTS ONLY
 4. ALL G.I. PIPES ARE OF B CLASS
 5. STRUCTURE MOUNTING BOLTS ARE NOT IN SCOPE OF SUPPLY
 6. TOLERANCE - +/- 5%

REFERENCE DRAWING NOS.
 1. MALE & FEMALE CONTACT DRAWING - REW/244 LI SH. NO. 2
 2. TERMINAL CONNECTOR - REW/244 SH. NO. 3
 3. OPERATING MECH BOX (MAIN) - REW/244 (MOT) SH. NO. 4 & 5

Electricity Sub Station Design Circle II
 UPPTO, 13th Floor, Shakti Bhawan Lko.
DRAWING APPROVED
 AE  EE  SE 



PART LIST

01. TERMINAL STUD (25 MM OD, COPPER ROD)
02. TERMINAL JAWS (25X3.5MM, 3 PAIR FINGERS, HDE CU SILVER PLATED)
03. MALE CONTACT ARM(100X95X5 MM, AL U SECT.)
04. MALE CONTACT (75X3.5 MM, 1 PAIR FINGER, HDE CU SILVER PLATED)
05. FEMALE CONTACT ARM (100X95X5 MM, AL U SECT.)
06. FEMALE CONTACT JAWS (25 X 3.5 MM, 3 PAIR FINGERS, HDE CU SILVER PLATED)
07. SPRING (STAINLESS STEEL, WITH TAFELON INSERTS)
08. EARTH SWITCH JAWS (25X3.5 MM, 3 PAIR FINGERS, HDE CU SILVER PLATED)
09. E/S MC TIP 25MM ODCU PIPE
10. E/S MC ARM (38 MM OD, 32 MM ID, AL TUBE)
11. E/S MC MECHANISM(MS) *Cas Flexible - 30x5mm - 01 No*

NOTES

1. ALL DIMENSIONS ARE IN MM
2. ALL FERROUS PARTS ARE HOT DIP GALVANIZED
3. ALL HDE COPPER CONTACT POINTS ARE ELECTROPLATED
4. TOLERANCE : +/- 5%

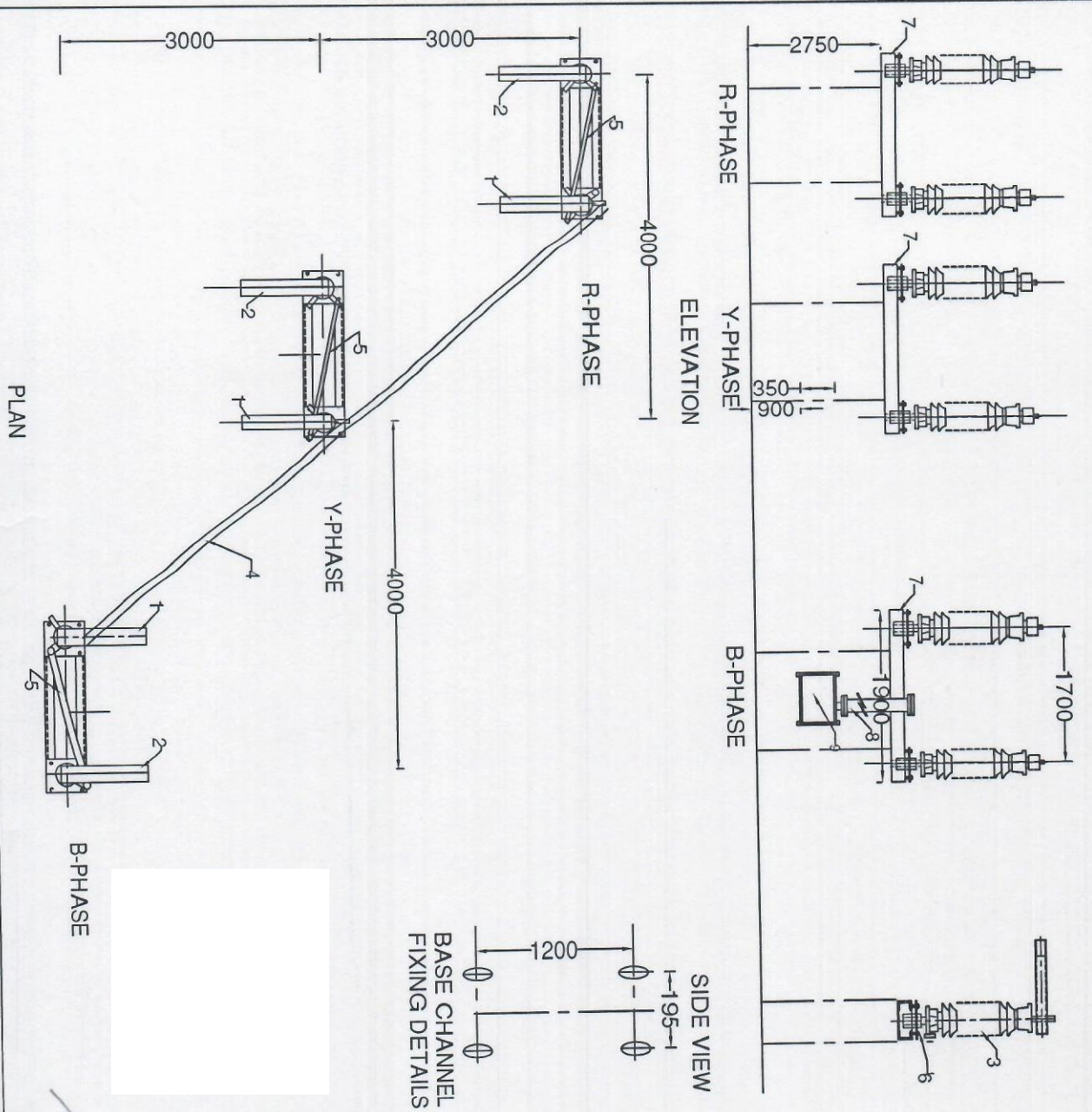
Electricity Sub Station Design Circle II
UPPTCL, 13th Floor, Shakti Bhawan Lko.

DRAWING APPROVED

AE

EE

SE



PART LIST	QTY
01. FEMALE CONTACT ASSEMBLY	3
02. MALE CONTACT ASSEMBLY	3
03. INSULATORS (NSS)	6
04. COUPLAR PIPE (25MM NB)	2
05. LINK PIPE (20 MM NB)	3
06. BEARING ASSEMBLY	6
07. BASE CHANNEL 75X40 (PAIRED)	3
08. OPER DOWN PIPE (40MM NB, 1.5 M)	1
09. OPERATING MECH BOX (MOTORIZED)	1

- NOTES**
1. ALL DIMENSIONS ARE IN MM
 2. ALL FERROUS PARTS ARE HOT DIP GALVANISED
 3. ALL COPPER PARTS ARE SILVER PLATED AT CONTACT POINTS ONLY
 4. ALL G.I PIPES ARE OF B CLASS
 5. STRUCTURE MOUNTING BOLTS ARE NOT IN SCOPE OF SUPPLY
 6. TOLERANCE - +/- 5%

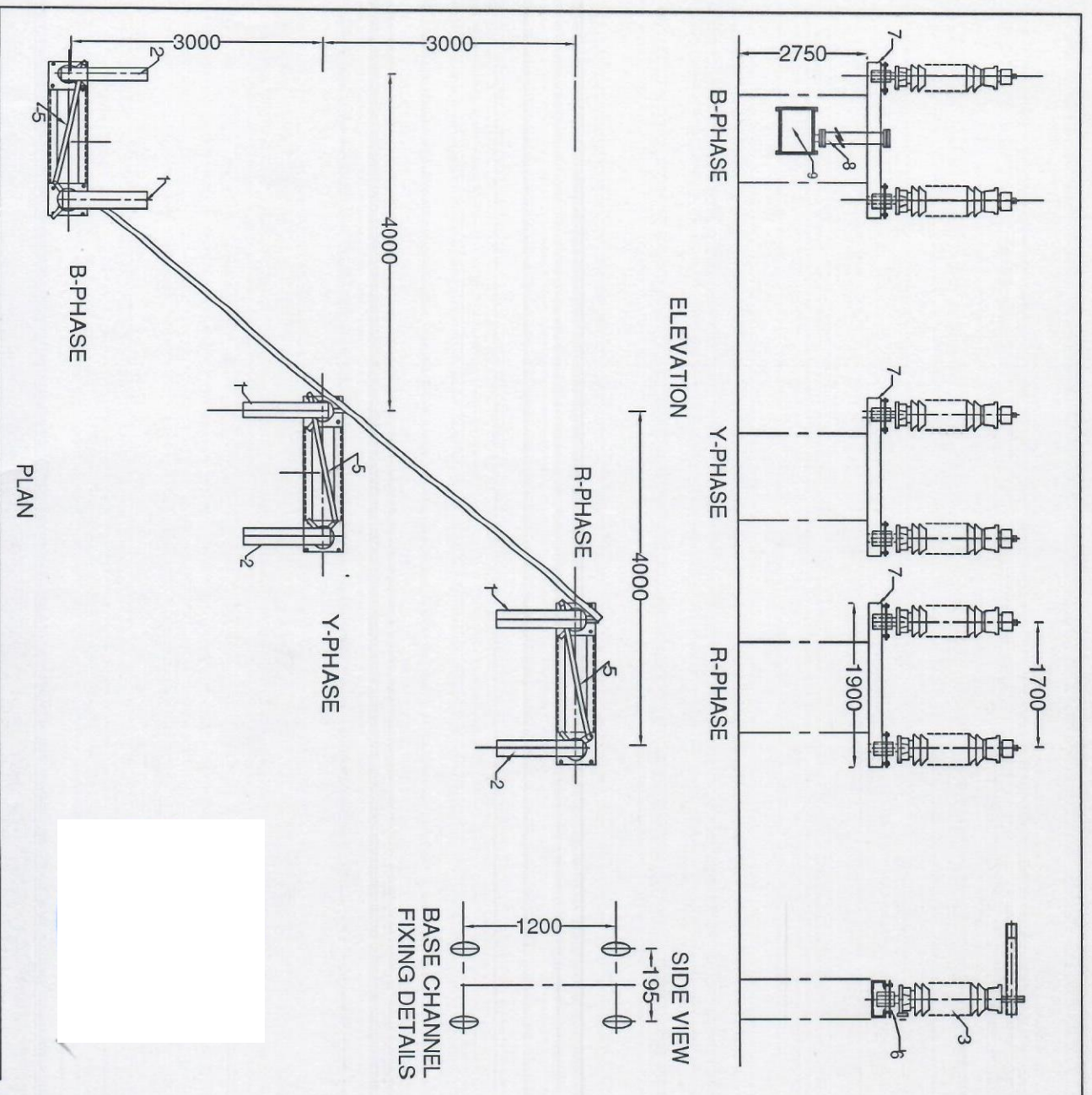
REFERENCE DRAWING NOS.

1. MALE & FEMALE CONTACT DRAWING - REW/244 BSH. NO. 2
2. TERMINAL CONNECTOR - REW/244 SH. NO. 3
3. OPERATING MECH BOX - REW/244 (MOT) SH. NO. 5

Electricity Sub Station Design Circle
 UPPTCL, 13th Floor, Shakti Bhawan Lko.

DRAWING APPROVED

AE EE SE



PART LIST	QTY
01. FEMALE CONTACT ASSEMBLY	3
02. MALE CONTACT ASSEMBLY	3
03. INSULATORS (NSS)	6
04. COUPLAR PIPE (25MM NB)	2
05. LINK PIPE (20MM NB)	3
06. BEARING ASSEMBLY	6
07. BASE CHANNEL 75X40 (PAIRED)	3
08. OPERT DOWN PIPE (40MM NB, 1.5 M)	1
09. OPERATING MECH BOX (MOTORIZED)	1

- NOTES**
1. ALL DIMENSIONS ARE IN MM
 2. ALL FERROUS PARTS ARE HOT DIP GALVANISED
 3. ALL COPPER PARTS ARE SILVER PLATED AT CONTACT POINTS ONLY
 4. ALL G.I PIPES ARE OF B CLASS
 5. STRUCTURE MOUNTING BOLTS ARE NOT IN SCOPE OF SUPPLY
 6. TOLERANCE - +/- 5%

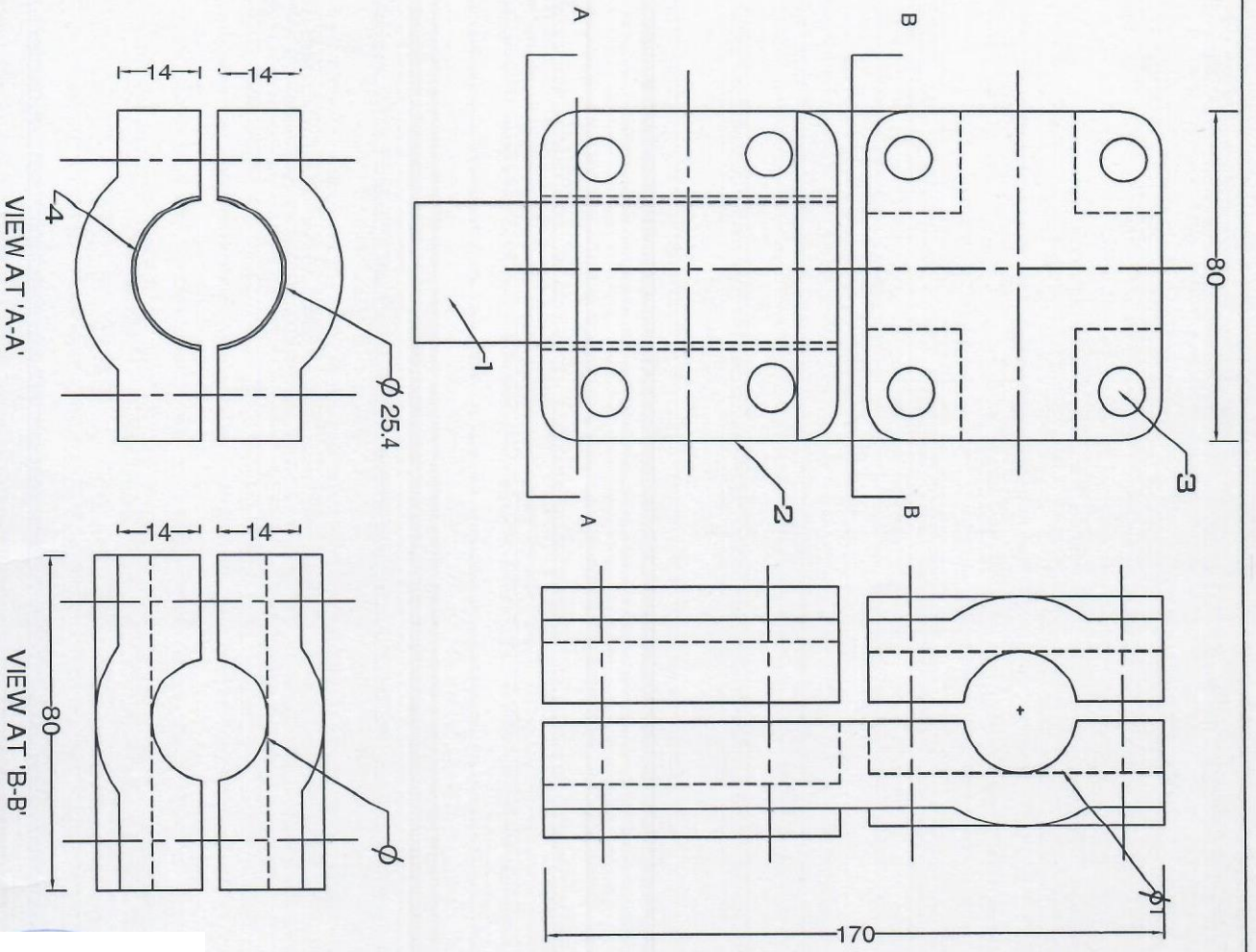
REFERENCE DRAWING NOS.

1. MALE & FEMALE CONTACT DRAWING - REW/244 B SH. NO. 2
2. TERMINAL CONNECTOR - REW/244 SH. NO. 3
3. OPERATING MECH BOX - REW/244 (MOT) SH. NO. 4 & 5

Electricity Sub Station Design Cricle
 UPP TCL, 13th Floor, Shakti Bhawan Lko.

DRAWING APPROVED

AE
 EE
 SE



PART LIST

- 01. TERMINAL STUD (25 MM OD, COPPER ROD)
- 02. CONNECTOR BODY - AL. ALLOY
- 03. NUTS AND BOLTS - MS ELECTROPLATED
- 04. BI-METALLIC STRIP - AL - CU

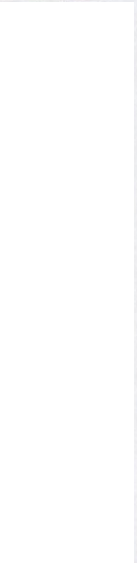
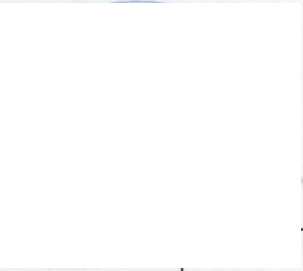
NOTES

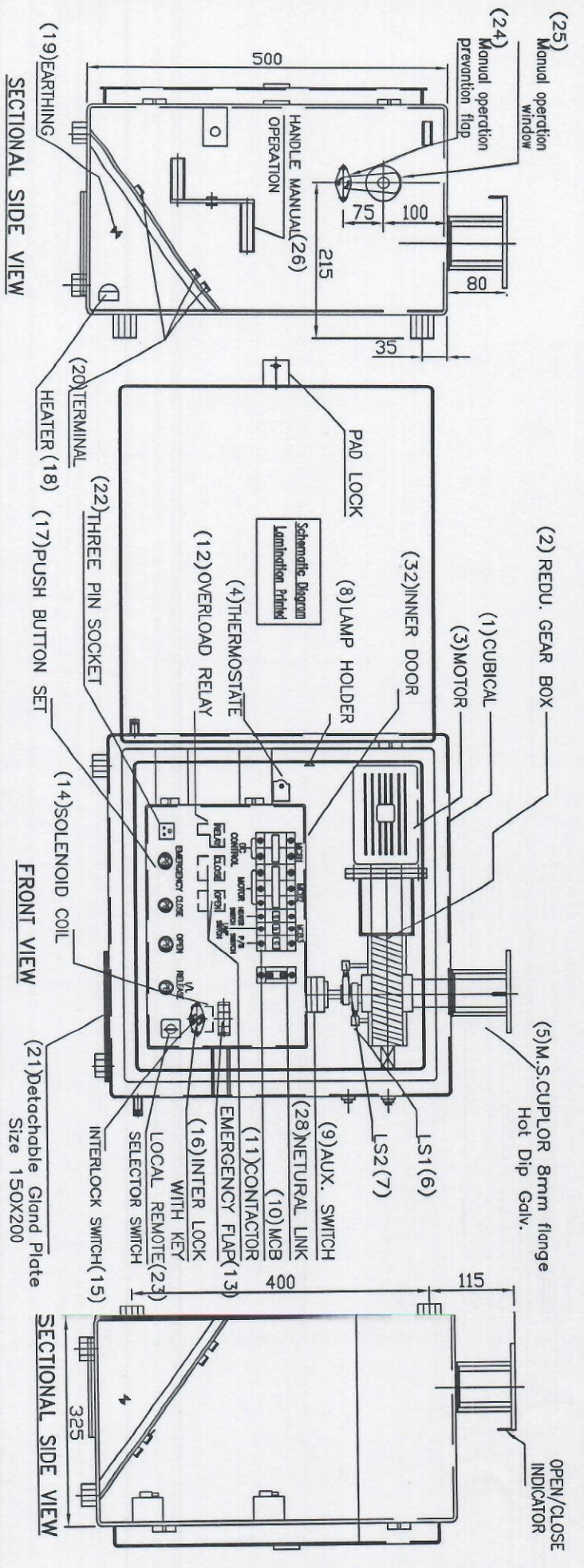
- 1. ALL DIMENSIONS ARE IN MM
- 2. CONNECTORS AS PER IS: 5561 - 1992
- 3. TOLERANCE : +/- 5%
- 4. ϕ FOR PANTHER = 21.0 MM
- 5. ϕ FOR ZEBRA = 28.62 MM

Electricity Sub Station Design Circle II
 UPP TCL, 13th Floor, Shakti Bhawan Lko.

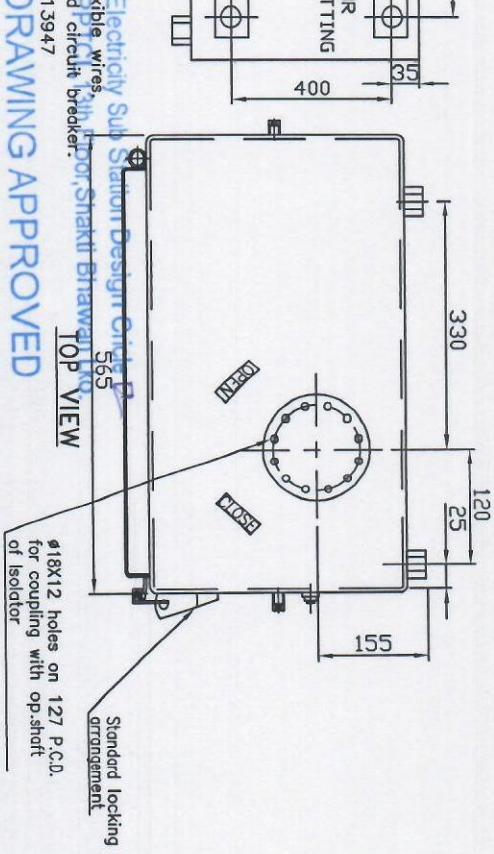
DRAWING APPROVED

AE  EE  SE 





- NOTES :**
1. 20% Spare terminals provided for customer use.
 2. Weight of operating mech. is 85 Kgs. approx.
 3. Tolerance of ±5mm on over all dimensions and ±1mm on hole diameter.
 4. Door & removable gland plate gasketed all around with rubber gasket.
 5. Auxillary switch wire up to terminal blocks by 2.5sq. mm PVC copper flexible wires.
 6. Spacer castle key lock shall be supplied with box for fixing on associated circuit breaker.
 7. Cubical is completely dust,vermin proof & degree of protection IP 67
 8. Cubical 2 mm MS Sheet.



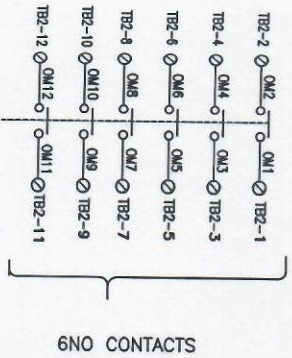
DRAWING APPROVED

MOTORIZED OPERATING BOX FOR 132 KV ISOLATOR

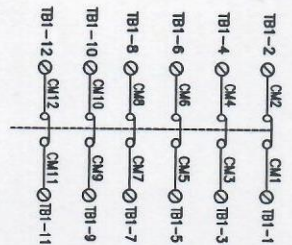
DRG	
CHD	
DATE: 23.01.19	
TOL: + / - 10%	

Operation Time 10 to 11 Second

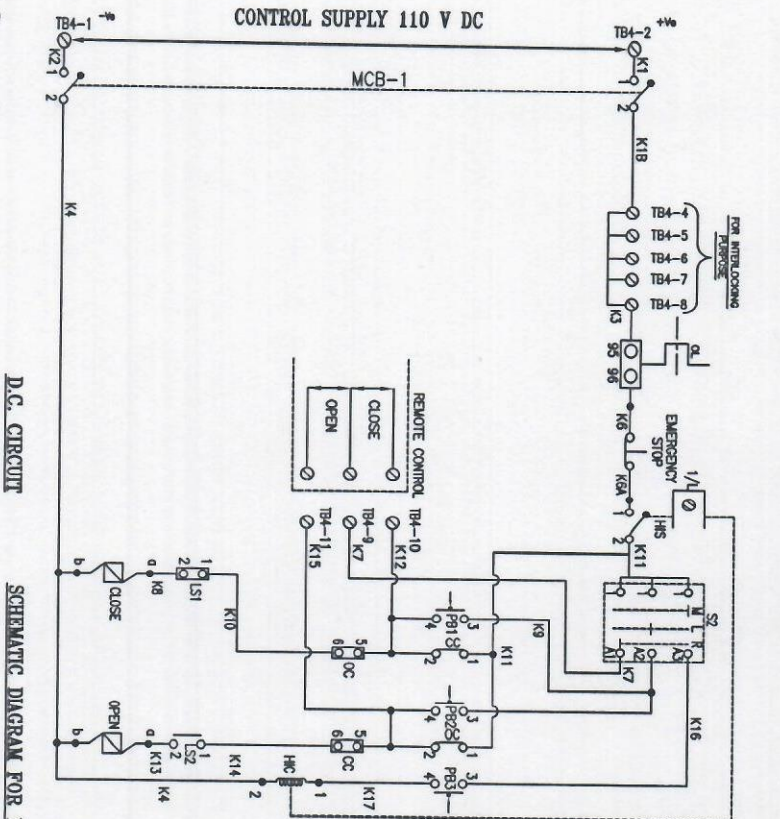
AUX. SWITCH 6 NO+6 NC CONTACTS



6NO CONTACTS

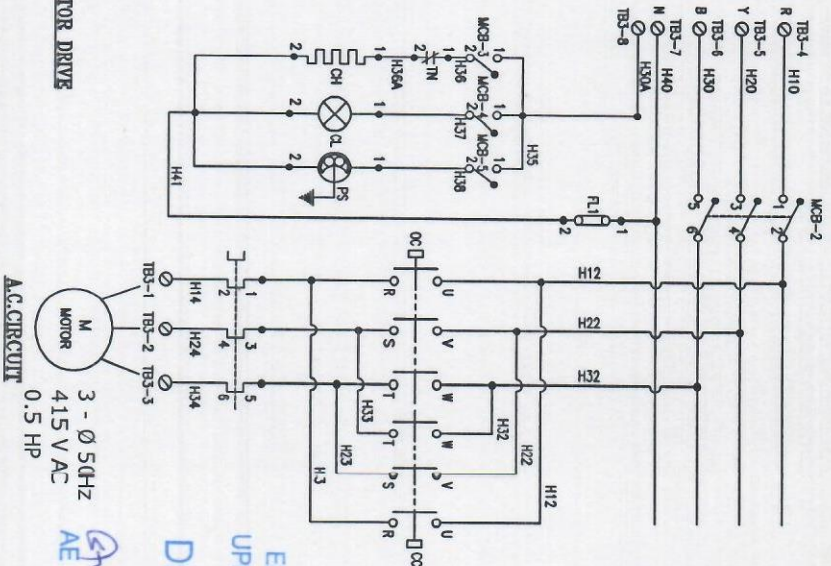


6NC CONTACTS



D.C. CIRCUIT

SCHEMATIC DIAGRAM FOR MOTOR DRIVE



A.C. CIRCUIT

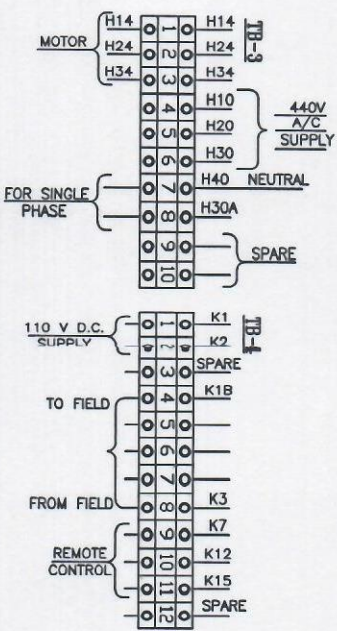
3 - Ø 50Hz
415 V AC
0.5 HP

Electricity Sub Station Design Circle
UPPTCL, 13th Floor, Shakti Bhawan Lko.
DRAWING APPROVED

AE
EE

SE

CIRCUIT DIAGRAM FOR MOTORIZED OPERATING BOX



DRN	
CHD	
APPD	
DATE	