

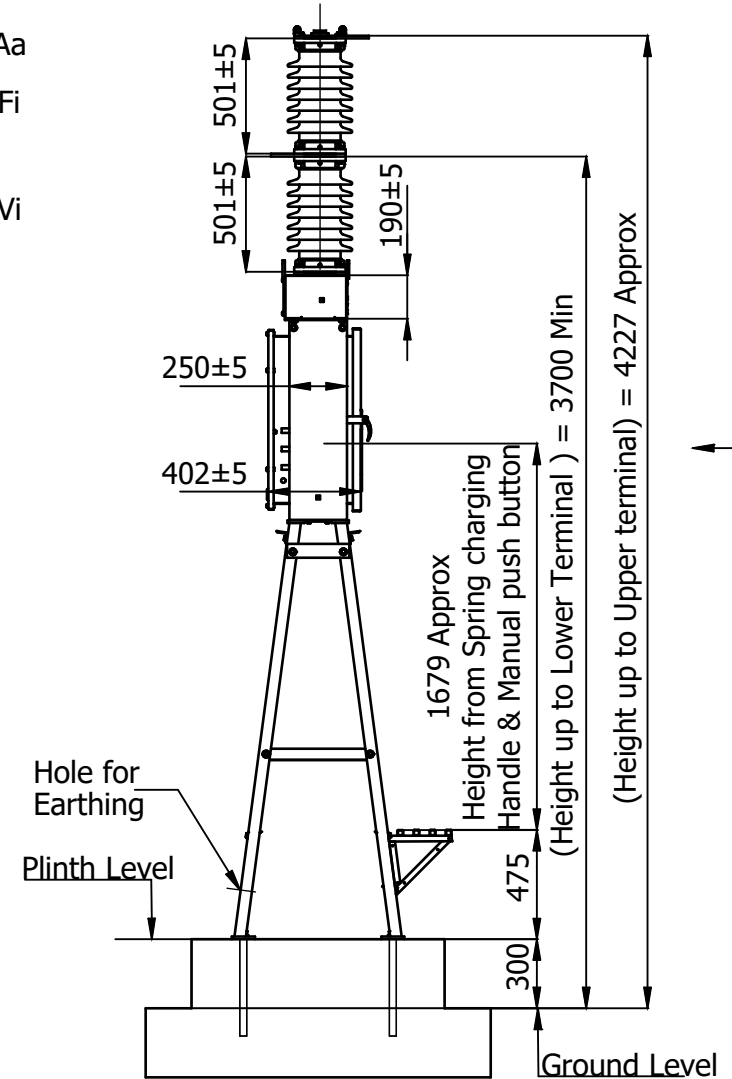
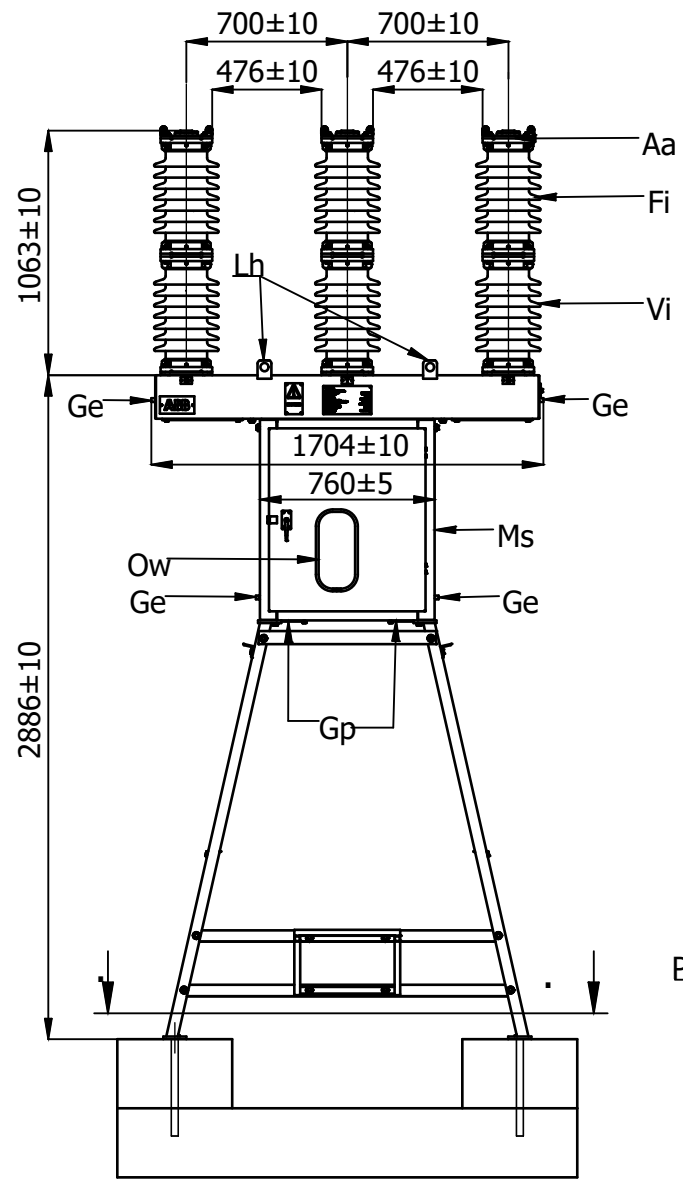
36 kV VACUUM CIRCUIT BREAKER

TECHNICAL DETAILS:

STANDARD	IEC62271-100
HIGHER SYSTEM VOLTAGE	36 kV
SERVICE VOLTAGE	33 kV
RATED CURRENT	1600 A
RATED FREQUENCY	50 Hz
BASIC INSULATION LEVEL	70 / 170 kVp
SHORT CIRCUIT BREAKING CURRENT	25 kA / 3 SEC
SHORT CIRCUIT MAKING CURRENT	62.5 kAp
MINIMUM CREEPAGE	25 kV/mm
CONTROL VOLTAGE	220 VDC
SPRING CHARGE MOTOR SUPPLY VOLTAGE	230 VAC
AUXILIARY SUPPLY VOLTAGE	230 VAC
PAINT SHADE	RAL 7032 (min 90 micron)
ENCLOSURE FABRICATION MATERIAL TYPE	MS
ENCLOSURE FABRICATION MATERIAL THICKNESS	3 mm
SUPPORT STRUCTURE TYPE	CB

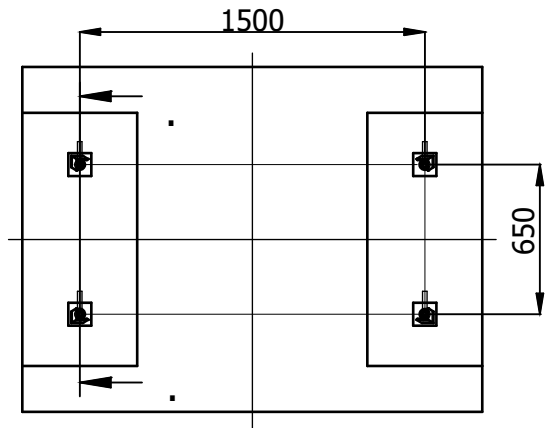
During the installation, commissioning period and the time of operation, client is obliged to follow all instructions and recommendation given by manufacturers of individual instruments installed inside supplied equipment

Based on			Prepared	Date	Title	Order No	= K00
			Checked	CHECKED BY	Approved	APPROVED BY	
			Project name	COMMON DRAWINGS			+
			PROJECT TITLE PAGE			DCC Code	Lang.
						Doc. No.	Page A00
Rev. Code	Date	Name					Pages 1

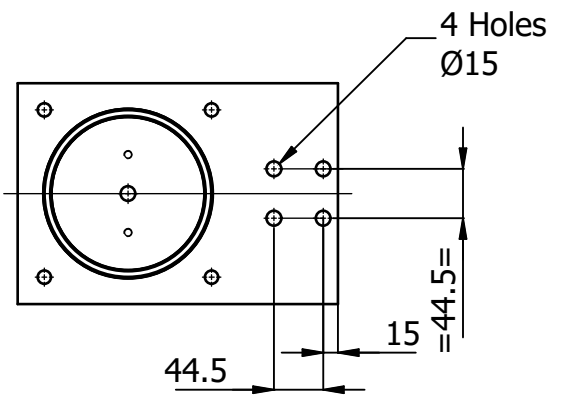


- Aa Terminals (Al alloy)
- Fi Interrupting Chamber
- Fb Foundation bolt (M20)
- Ms Control cubical with spring drive
- Vi Supporting insulator column
- Vs Supporting structure (Galvanise steel)
- Ow Observation window (Transparent polycarbonate)
- Ge Earthing point (Galvanise Bus)
- Lh Hooks for lifting.
- Gp Gland plate for Cable connection

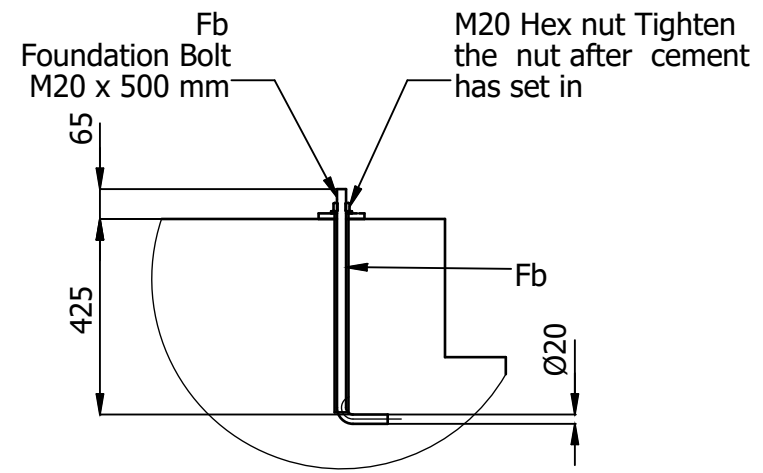
- Note :-
- Total mass including 3 poles, Drive and structure : 450 kg approx.
 - Degree of protection : IP 55
 - Thickness of cabinet - 3 mm, Thickness of Door- 2.0 mm
 - Width x Height of control cabinet : 760 x 874
 - With Pad lock facility.
 - Color of porcelain insulator : Brown.
 - Make of insulator : IEC,CJI or equivalent.
 - Minimum Creepage Distance of porcelain insulator : 25 kV/mm
 - Paint shade of control cabinet : RAL 7032 (min 90 micron)



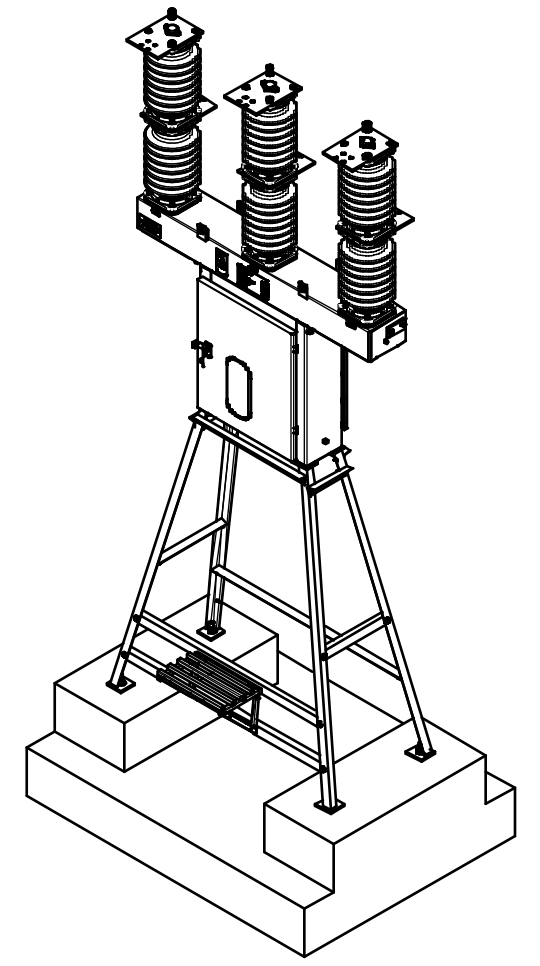
Sectional View
Foundation Plinth details



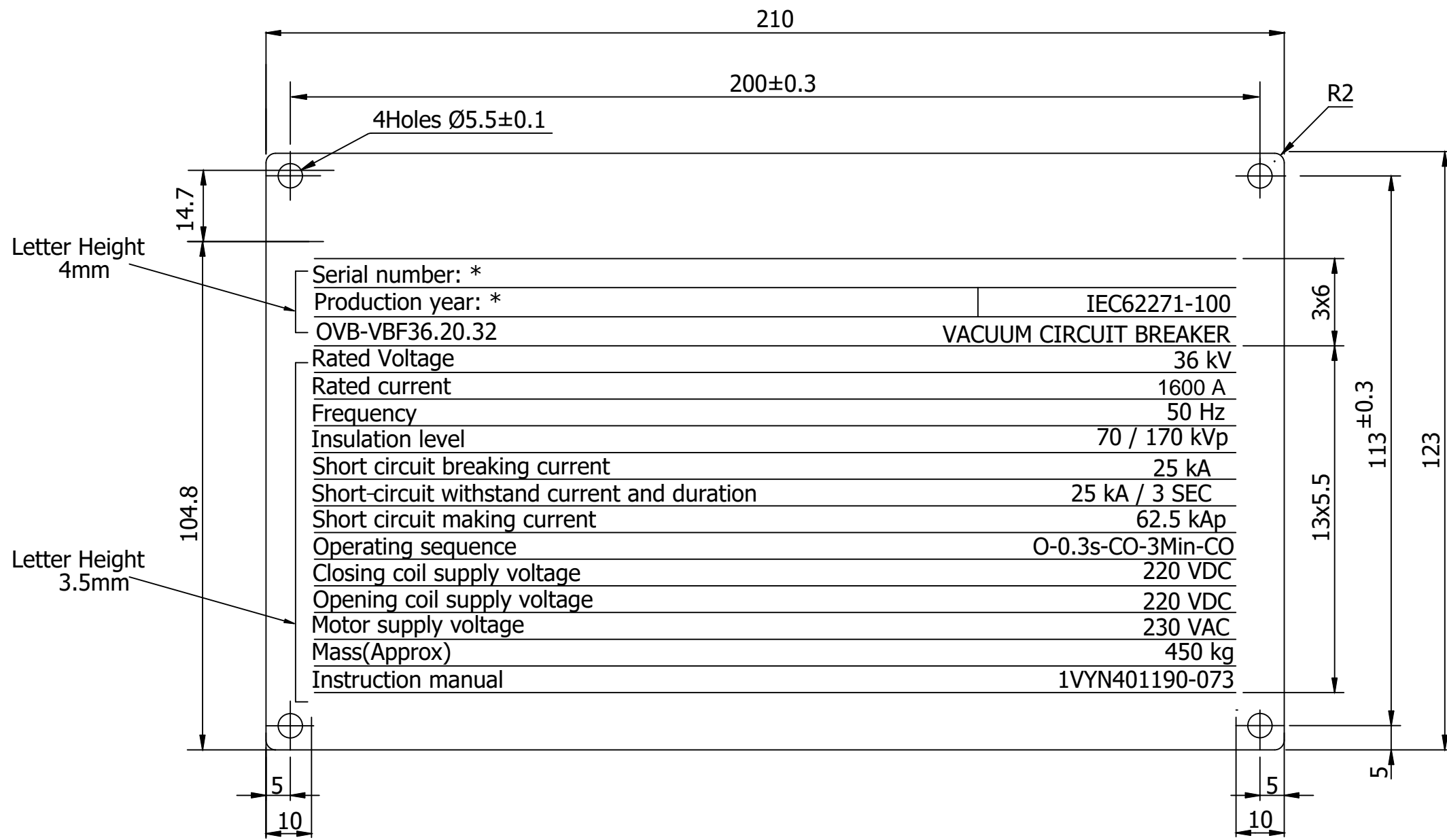
Thickness= 12mm
Aa-Terminal plate details



FOUNDATION BOLT DETAILS



Based on			Prepared	Date	Title	Order No	= H01
Customer:			Checked	CHECKED BY	Approved	APPROVED BY	+ LV
Contractor / Contract No.			Project name			DCC Code	Lang.
Rev. Code	Date	Name				Doc. No.	Page 19
1							Pages 9



* Text, line to be photoetched (Etching depth 0.2 min.) or laser engraved on natural background. (Black Colour)

* Dimensions : S.S. Sheet, t=0.7 mm

* Material type : Steel 07Cr18Ni9 as per IS : 6911-'72

Based on			Prepared	Date	Title	Order No	= H01	
		Customer:	Checked	CHECKED BY	Approved	APPROVED BY	+ LV	
		Contractor / Contract No.	Project name			DCC Code		Lang.
Rev. Code	Date	Name				Doc. No.		Page 20
1								Pages 9