

**GENERAL NOTES :-**

1. ALL DIMENSIONS ARE **IN MM.**
2. THE PANELS SHALL BE DUST & VERMIN PROOF, FREE STANDING, FLOOR MOUNTED AND COMPARTMENTALISED.
3. THE PANEL SHALL BE SUITABLE FOR **3Ø, 4W, 415V AC, 50 HZ SUPPLY.**
4. THE PANEL SHALL BE FABRICATED WITH
- A. FRAME, SIDE SHEET, FRONT/REAR DOOR - **3.0 MM. CRCA.**  
 B. PARTITION SHEET, SIDE COVER & REMOVABLE TOP & BOTTOM SHEET - **3.0 MM. CRCA.**  
 C. EQUIPMENT MOUNTING PLATE - **2.0 MM. CRCA**  
 D. UNDRILLED REMOVABLE GLAND PLATE - **3.0 MM. CRCA.**  
 E. BASE FRAME - **75X40 MM.**
5. RUBBER GASKET SHALL BE PROVIDED INSIDE THE DOORS TO MAKE THE PANEL DUST AND VERMIN PROOF.
6. THE PANEL SHALL BE PAINTED WITH **ELECTROSTATIC POWDER COATING PAINT** AFTER 9 TANK PROCESS.
7. BUS BAR SHALL BE OF **ELECTROLYTIC GRADE COPPER** SUPPORTED ON NON HYGROSCOPIC, NON CARBONISING, CORROSION RESISTANCE, SMC/DMC INSULATORS.
8. BUS BAR SHALL BE INSULATED HEAT SHRINKABLE COLOURED PVC **SLEEVES** RED, YELLOW, BLUE AND BLACK FOR IDENTIFICATION.
9. **EARTH BUS** SHALL BE PROVIDED THROUGHOUT THE PANEL LENGTH.
10. CONTROL WIRING SHALL BE CARRIED OUT WITH 1100V GRADE PVC INSULATED **COPPER FLEXIBLE WIRE** AND FOLLOWING COLOUR STANDARD.
- A. AC VOLTAGE CIRCUIT - 1.5 SQ MM RED, YELLOW, BLUE, BLACK  
 B. CURRENT CIRCUIT - 2.5 SQ MM RED, YELLOW, BLUE, BLACK  
 C. AC CONTROL CKT. - 1.5 SQ MM RED, BLACK  
 D. DC CIRCUIT - 1.5 SQ MM GREY  
 E. GROUNDING - 2.5 SQ MM GREEN

11. THE MINIMUM CLEARANCE IN MAIN BUSBARS SHALL BE AS FOLLOWS:

- A. BETWEEN PHASE TO PHASE - **25 MM**  
 B. BETWEEN PHASE TO NEUTRAL - **25 MM**  
 C. BETWEEN PHASE TO EARTH - **25 MM**  
 D. BETWEEN NEUTRAL TO EARTH - **25 MM**

12. **ALLUMINIUM** NAME PLATE SHALL BE PROVIDED ON EACH FEEDER AND PANEL.

13. PANEL **DOOR LOCK** SHALL BE PROVIDED ON EACH DOOR.

14. **CABLE ENTRY** AS PER G.A. DRAWING.

15. **PAINT SHADE** SIEMENS GRAY (POWDER COATING)

**TENDER PURPOSE**

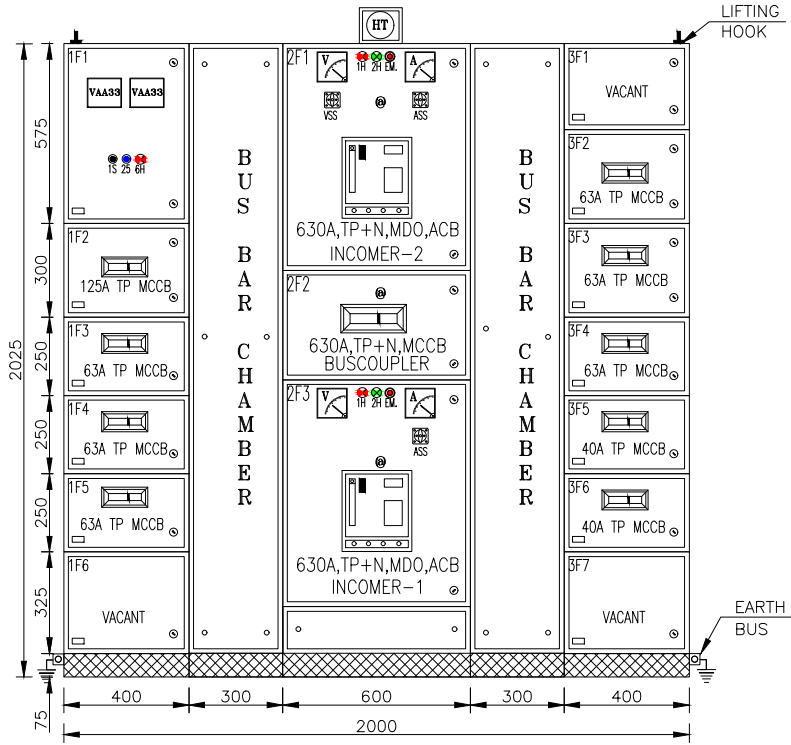
11 12 13 14 15 16 17 18

A

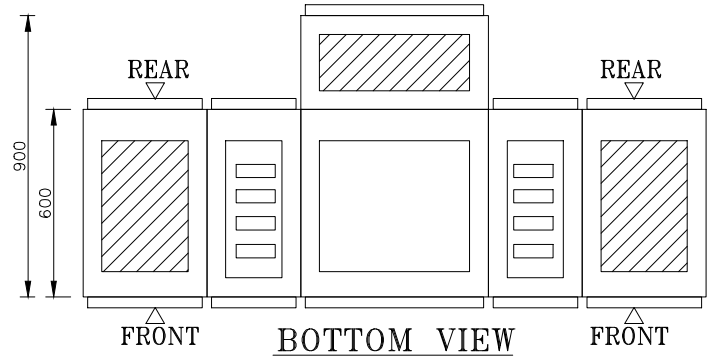
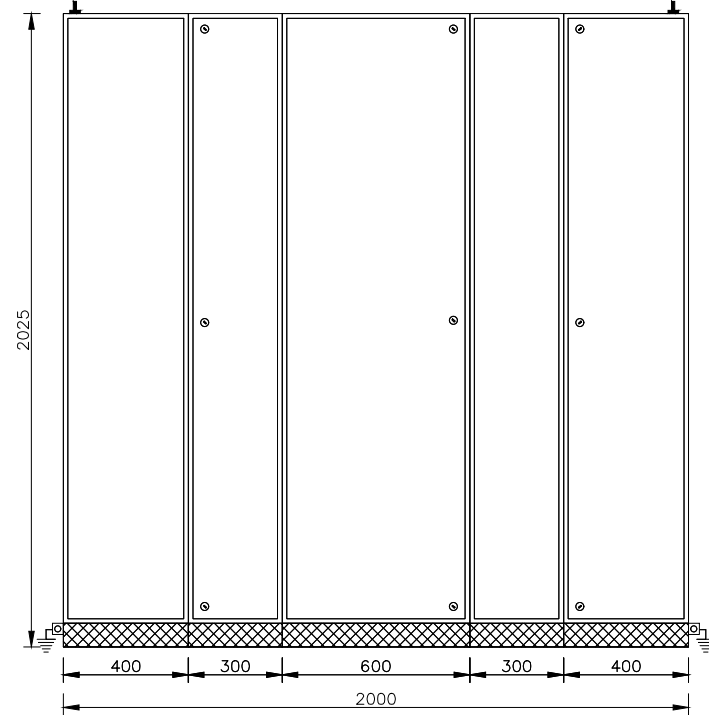
B

C

D



**FRONT VIEW**



**BOTTOM VIEW**

11

12

13

14

15

16

17

18

A

A

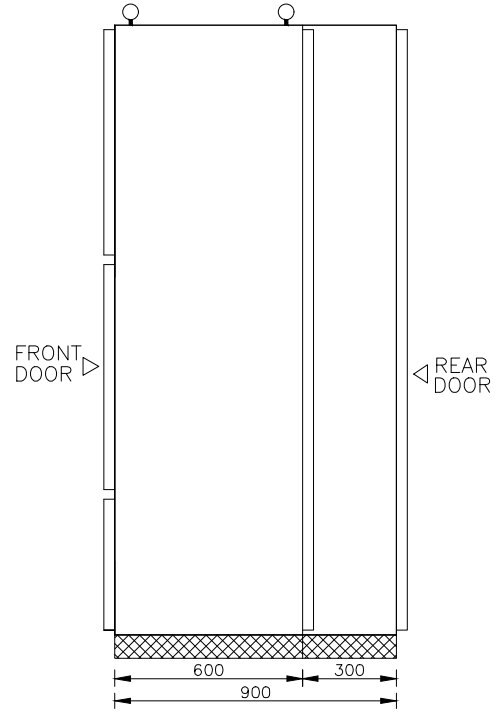
B

B

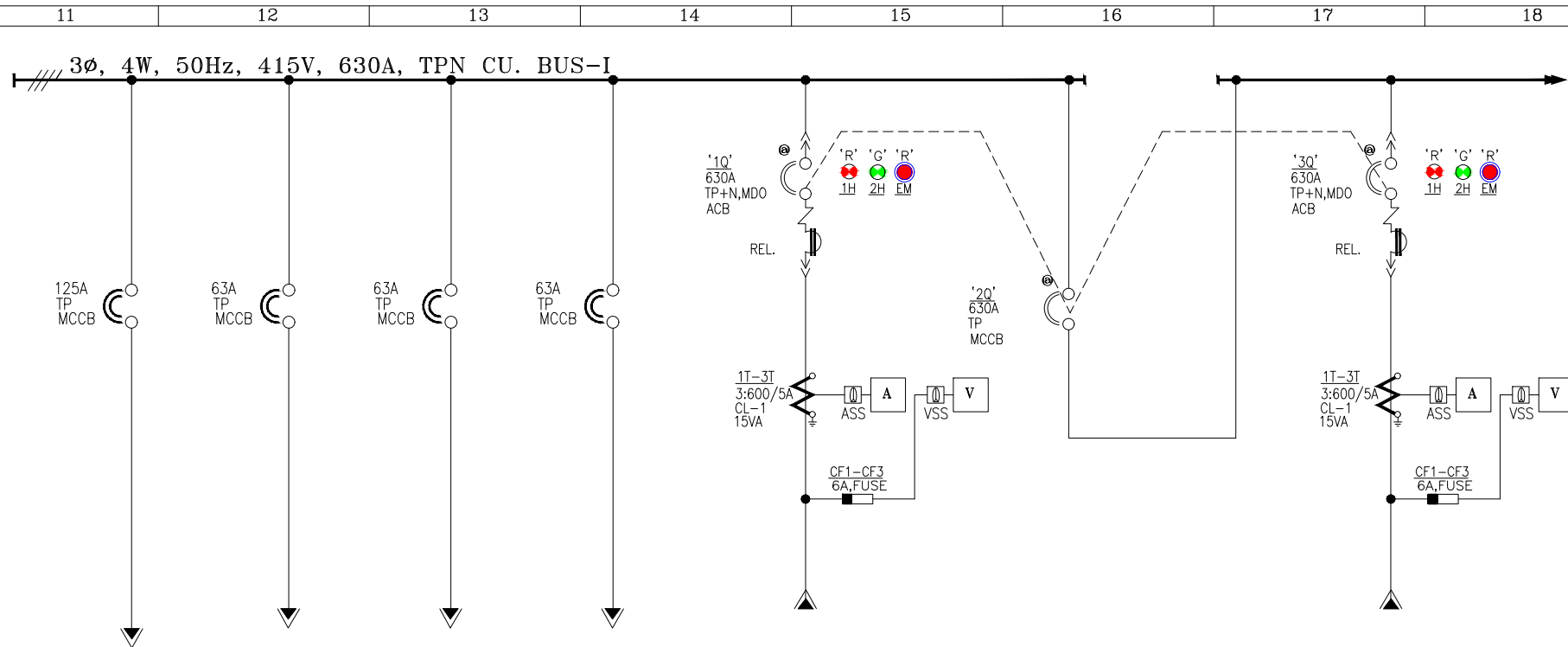
C

C

D



SIDE SECTIONAL VIEW  
OF INCOMER



FEEDER No.	1F2	1F3	1F4	1F5	2F1	2F2	2F3
FEEDER RATING	125A	63A	63A	63A	630A	630A	630A
FEEDER DESCRIPTION	SWITCHYARD CUBICAL	SWITCHYARD LIGHTING	COLONY LIGHTING	SPARE	INCOMER-2 (MAINS SUPPLY)	BUSCOUPLER	INCOMER-1 (MAINS SUPPLY)
CABLE SIZE IN mm <sup>2</sup>	**	**	**	**	**	--	**
SCHEME DRG MODULE	OG1	OG1	OG1	OG1	IC2	BC	IC1

11

12

13

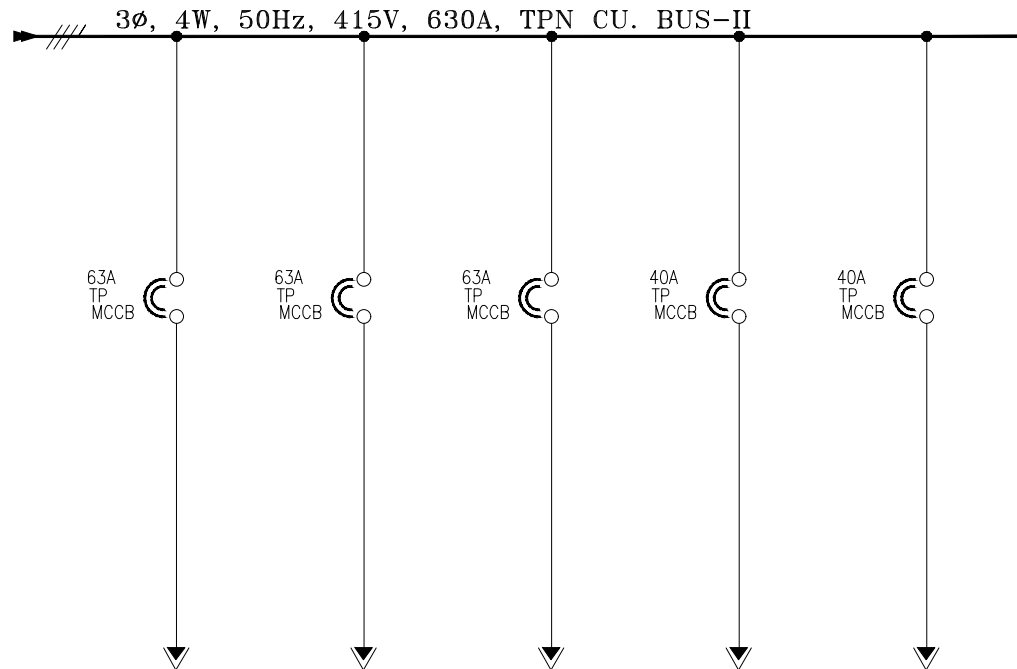
14

15

16

17

18



A

A

B

B

C

C

FEEDER No.	3F2	3F3	3F4	3F5	3F6
FEEDER RATING	63A	63A	63A	40A	40A
FEEDER DESCRIPTION	BATY CHARGER	CARRIER	CONTROL ROOM LIGHTING	CONTROL PANEL	OUTDOOR EQUIPMENT
CABLE SIZE IN mm <sup>2</sup>	**	**	**	**	**
SCHEME DRG MODULE	OG1	OG1	OG1	OG1	OG1

D

Sr. No.	Item Description	Qty	Make
A	<b>Incoming :-</b>		
1	ACB 630A TP 50KA MDO O/L,S/C Thermal magnetic Based	2	HPL
2	S/T Release 110VDC	2	HPL
3	MCCB 630A TP 36KA Therm.based	1	HPL
4	Mechanical Lock for ACB	2	HPL
5	Mechanical Lock for MCCB	1	Reputed
B	<b>Incoming Metering :-</b>		<b>Set.</b>
1	Amp Meter 600/5A AnalogType	2	AE
2	Volt Meter 0-500V AnalogType	2	AE
3	Amp Selector Switch	2	Vaishno
4	Volt Selector Switch	2	Vaishno
5	Indicating lamp	5	C&S(Rass)
6	Control fuse with HRC 20/2A	7	C&S
7	Current Transformer 600/5A Class-1	6	AE
8	Push Button for Emergency Trip	2	Vaishno
9	Push Button (Black,Blue)	2	Vaishno
10	AuxRelay 110VDC	1 SET	Reputed
11	Hooter 110VDC	1	Asian
C	<b>Outgoing :-</b>		
1	MCCB 125A TP 25 KA Therm.based	1	HPL
2	Trip Alarm Contact	1	HPL
3	MCCB 63A TP 25 KA Therm.based	6	HPL
4	MCCB 40A TP 25 KA Therm.based	2	HPL
5	Trip Alarm Contact	7	HPL

**GENERAL NOTES :-**

1. ALL DIMENSIONS ARE **IN MM.**
2. THE PANELS SHALL BE DUST & VERMIN PROOF, FREE STANDING, FLOOR MOUNTED AND COMPARTMENTALISED.
3. THE PANEL SHALL BE SUITABLE FOR **3Ø, 4W, 415V AC, 50 HZ SUPPLY.**
4. THE PANEL SHALL BE FABRICATED WITH
- |   |                 |
|---|-----------------|
| A. FRAME, SIDE SHEET, FRONT/REAR DOOR                         | - 2.0 MM. CRCA. |
| B. PARTITION SHEET, SIDE COVER & REMOVABLE TOP & BOTTOM SHEET | - 2.0 MM. CRCA. |
| C. EQUIPMENT MOUNTING PLATE                                   | - 2.0 MM. CRCA  |
| D. UNDRILLED REMOVABLE GLAND PLATE                            | - 2.0 MM. CRCA. |
| E. BASE FRAME   | - 75X40 MM.     |
5. RUBBER GASKET SHALL BE PROVIDED INSIDE THE DOORS TO MAKE THE PANEL DUST AND VERMIN PROOF.
6. THE PANEL SHALL BE PAINTED WITH **ELECTROSTATIC POWDER COATING PAINT** AFTER 9 TANK PROCESS.
7. BUS BAR SHALL BE OF **ELECTROLYTIC GRADE COPPER** SUPPORTED ON NON HYGROSCOPIC, NON CARBONISING, CORROSION RESISTANCE, SMC/DMC INSULATORS.
8. BUS BAR SHALL BE INSULATED HEAT SHRINKABLE COLOURED PVC **SLEEVES** RED, YELLOW, BLUE AND BLACK FOR IDENTIFICATION.
9. **EARTH BUS** SHALL BE PROVIDED THROUGHOUT THE PANEL LENGTH.
10. CONTROL WIRING SHALL BE CARRIED OUT WITH 1100V GRADE PVC INSULATED **COPPER FLEXIBLE WIRE** AND FOLLOWING COLOUR STANDARD.
- |                       |                                      |
|-----------------------|--------------------------------------|
| A. AC VOLTAGE CIRCUIT | - 1.5 SQ MM RED, YELLOW, BLUE, BLACK |
| B. CURRENT CIRCUIT    | - 2.5 SQ MM RED, YELLOW, BLUE, BLACK |
| C. AC CONTROL CKT.    | - 1.5 SQ MM RED, BLACK               |
| D. DC CIRCUIT         | - 1.5 SQ MM GREY                     |
| E. GROUNDING          | - 2.5 SQ MM GREEN                    |

11. THE MINIMUM CLEARANCE IN MAIN BUSBARS SHALL BE AS FOLLOWS:

A. BETWEEN PHASE TO PHASE	- 25 MM
B. BETWEEN PHASE TO NEUTRAL	- 25 MM
C. BETWEEN PHASE TO EARTH	- 25 MM
D. BETWEEN NEUTRAL TO EARTH	- 25 MM

12. **ALLUMINIUM** NAME PLATE SHALL BE PROVIDED ON EACH FEEDER AND PANEL.

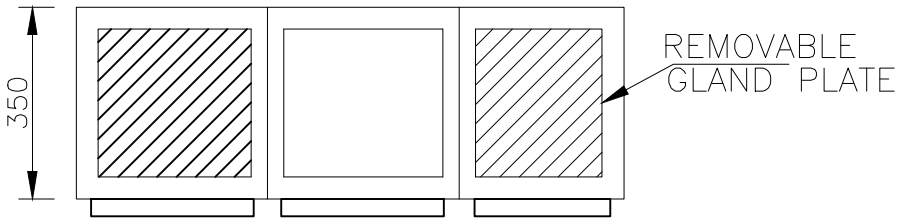
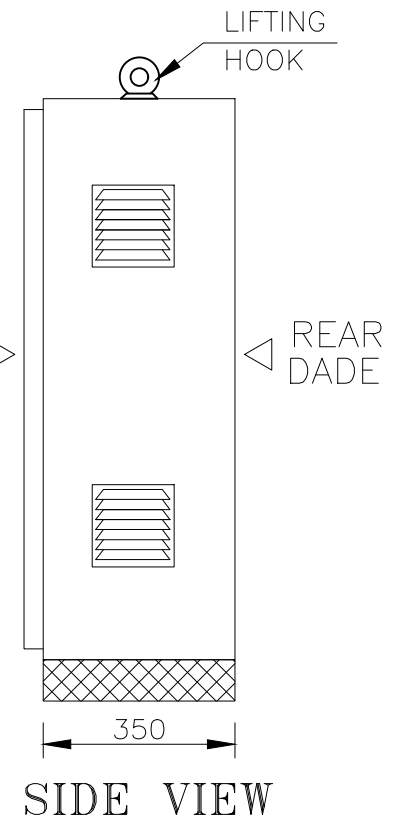
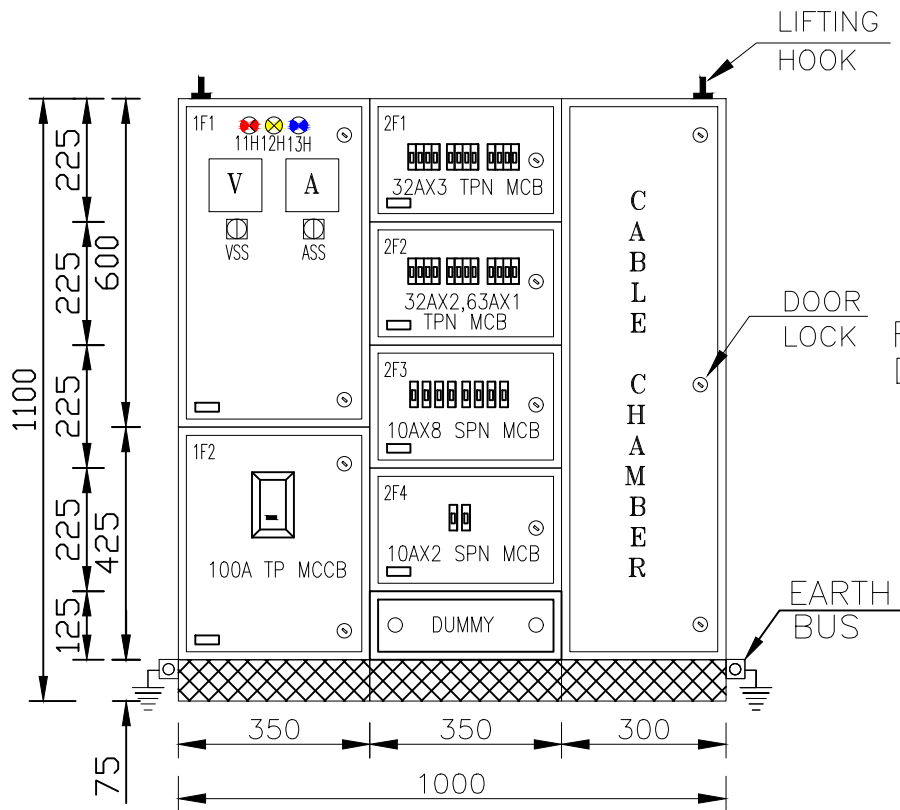
13. PANEL **DOOR LOCK** SHALL BE PROVIDED ON EACH DOOR.

14. **CABLE ENTRY** AS PER G.A. DRAWING.

15. **PAINT SHADE** SIEMENS GRAY (POWDER COATING)

TENDER PURPOSE

A  
B  
C  
D



FRONT VIEW  
BOTTOM VIEW

SIDE VIEW



11

12

13

14

15

16

17

18

3 $\phi$ , 4W, 50Hz, 415V, 100A,TPN COPPER BUS100A  
TP  
MCCB1T-3T  
3:100/5A  
CL-1  
5VAA  
ASSV  
VSSR' Y' B'  
11H 12H 13HCF1-CF3  
6A32A  
TPN  
MCB32A  
TPN  
MCB32A  
TPN  
MCB63A  
TPN  
MCB32A  
TPN  
MCB32A  
TPN  
MCB10A  
SPN  
MCB10A  
SPN  
MCB

A

A

B

B

C

C

FEEDER No.	1F1,1F2	2F1	2F1	2F1	2F2	2F2	2F2	2F3	2F3
FEEDER RATING	100A	32A	32A	32A	63A	32A	32A	10A	10A
FEEDER DESCRIPTION	INCOMER	--	--	--	--	--	--	--	--
CABLE SIZE IN mm2	**	**	**	**	**	**	**	**	**
SCHEME DRG MODULE	IC1	OG1	OG1	OG1	OG1	OG1	OG1	OG1	OG1

D



SR.NO.	ITEM DISCRPTION	QTY	UNIT	MAKE
<b>A</b>	<b>INCOMER :-</b>			
1	MCCB 100A TP	1	NOS.	HPL
<b>B</b>	<b>INCOMING METERING:-</b>			
1	AMP METER FLUSH MOUNT 96X96 SQMM ANALOG TYPE	1	NOS.	AE
2	VOLT METER FLUSH MOUNT 96X96 SQMM ANALOG TYPE	1	NOS.	AE
3	AMP SELLECTOR SWITCH 6A	1	NOS.	VAISHNO
4	VOLT SELLECTOR SWITCH 6A	1	NOS.	VAISHNO
5	PHASE INDICATION LAMP R,Y,B	3	NOS.	RASS(C&S)
8	CURRENT TRANSFORMER 100/5A CL-1, 5VA TAPE WOUND	3	NOS.	AE
9	CONTROL FUSE WITH HRC	1SET	NOS.	C&S
<b>C</b>	<b>OUTGOING :-</b>			
1	MCB 63A TPN 10KA C CURVE	1	NOS.	ABB
2	MCB 32A TPN 10KA C CURVE	5	NOS.	ABB
3	MCB 10A SPN 10KA C CURVE	10	NOS.	ABB
4	PANEL LAMP 230V AC CFL 9W	1	NOS.	REPUTED
5	LAMP SWITCH 6A 1 POLE ON/OFF TOGLE SWITCH	1	NOS.	REPUTED
6	SPACE HEATER 60W	1	NOS.	REPUTED
7	TERMOSTATE 30-110 DEG. C	1	NOS.	REPUTED
8	HEATER ON/OFF SWITCH 6A	1	NOS.	REPUTED
9	CONTROL FUSE WITH HRC	1SET	NOS.	C&S